



## SECTION I – CHARACTERISTICS

SUPPRESSORS

SPORTING ARMS &amp; AMMUNITION MANUFACTURERS' INSTITUTE

**THREAD & SOCKET DRAWINGS: CFR: M18 X 1.5-4g6g / M18  
X 1.5-6H6G; >.305 / ≤.450 BORE DIAMETER**

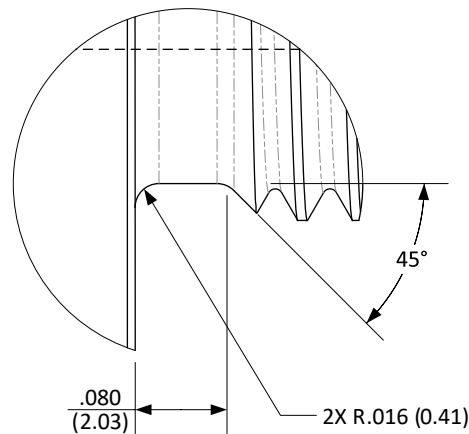
ISSUED 06/07/2022

Revised

**CFR: M18 X 1.5-4g6g; >.305 (7.75) / ≤.450 (11.43) BORE – SHOULDER INDEX (Cont'd)**

SHEET 2 OF 4

## DETAIL A



DO NOT SCALE FROM DRAWING

## NOTES:

(XX.XX) = MILLIMETERS

DRAWING PREPARED USING THE DIMENSIONING CONVENTIONS DEFINED  
IN ASME Y14.5-2018.UNLESS OTHERWISE SPECIFIED  
DIMENSIONS ARE IN INCHES

.X	±.1 (3)	ANGLES	±0.5°
.XX	±.01 (0.3)	FILLET RADII	.005-.010 (0.13-0.25)
.XXX	±.005 (0.13)	BREAK EDGE	.005-.010 (0.13-0.25)
.XXXX	±.0005 (0.013)	SURFACE FINISH	▽ (▽)

SECTION I – CHARACTERISTICS

SUPPRESSORS

SPORTING ARMS & AMMUNITION MANUFACTURERS' INSTITUTE

THREAD & SOCKET DRAWINGS: CFR: M18 X 1.5-4g6g / M18 X 1.5-6H6G; >.305 / ≤.450 BORE DIAMETER

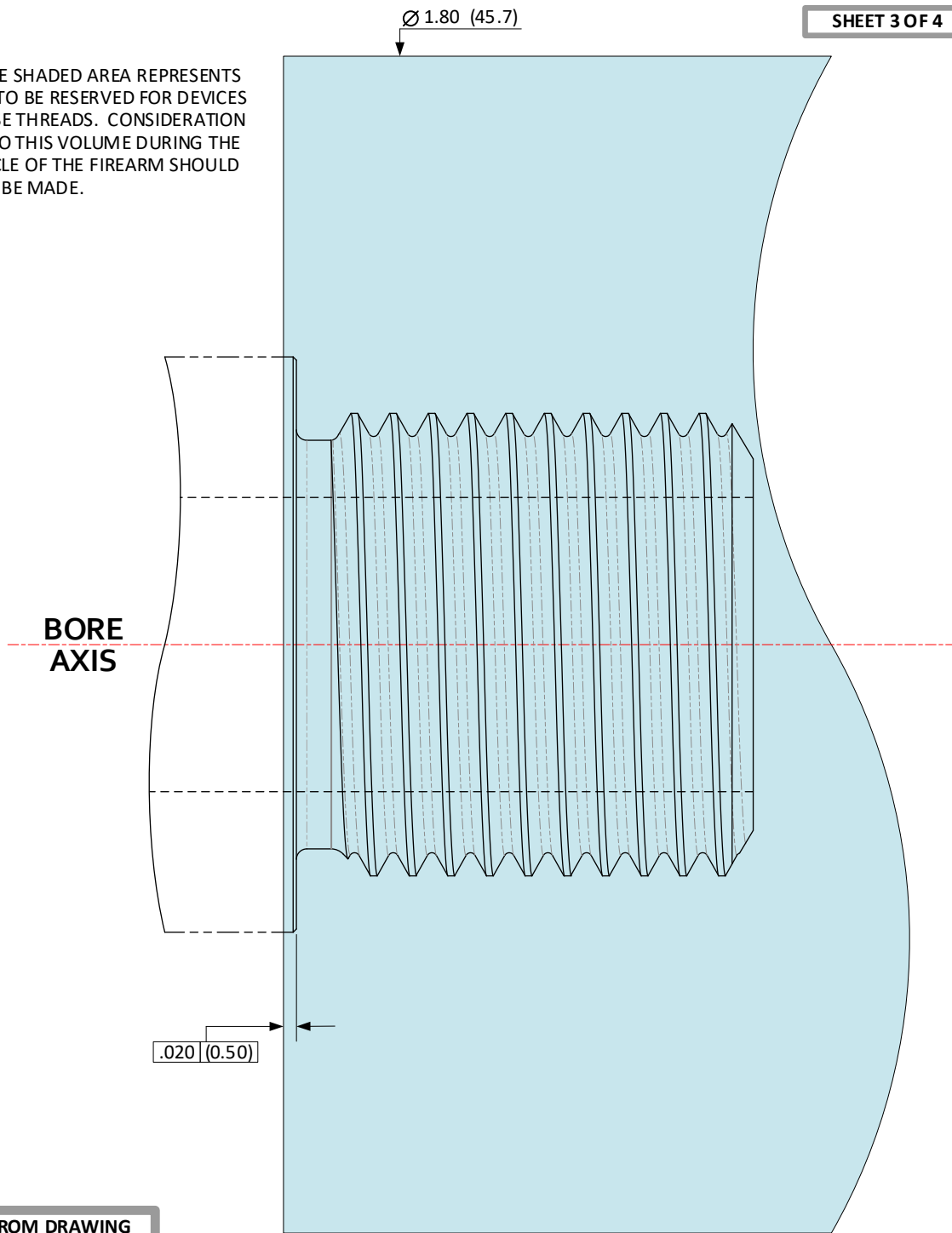
ISSUED 06/07/2022

Revised

**CFR: M18 X 1.5-4g6g; >.305 (7.75) / ≤.450 (11.43) BORE – SHOULDER INDEX (Cont'd)**

SHEET 3 OF 4

AS REFERENCE, THE SHADED AREA REPRESENTS A ZONE INTENDED TO BE RESERVED FOR DEVICES ATTACHED TO THESE THREADS. CONSIDERATION OF INTRUSION INTO THIS VOLUME DURING THE ENTIRE FIRING CYCLE OF THE FIREARM SHOULD BE MADE.



**DO NOT SCALE FROM DRAWING**

**NOTES:**

(XX.XX) = MILLIMETERS

DRAWING PREPARED USING THE DIMENSIONING

CONVENTIONS DEFINED IN ASME Y14.5-2018.

UNLESS OTHERWISE SPECIFIED DIMENSIONS ARE IN INCHES

- .X ±.1 (3) ANGLES ±0.5°
- .XX ±.01 (0.3) FILLET RADII .005-.010 (0.13-0.25)
- .XXX ±.005 (0.13) BREAK EDGE .005-.010 (0.13-0.25)
- .XXXX ±.0005 (0.013) SURFACE FINISH  $\sqrt{\text{R}}$  ( $\sqrt{\text{R}}$ )

SECTION I – CHARACTERISTICS

SUPPRESSORS

SPORTING ARMS & AMMUNITION MANUFACTURERS' INSTITUTE

THREAD & SOCKET DRAWINGS: CFR: M18 X 1.5-4g6g / M18 X 1.5-6H6G; >.305 / ≤.450 BORE DIAMETER

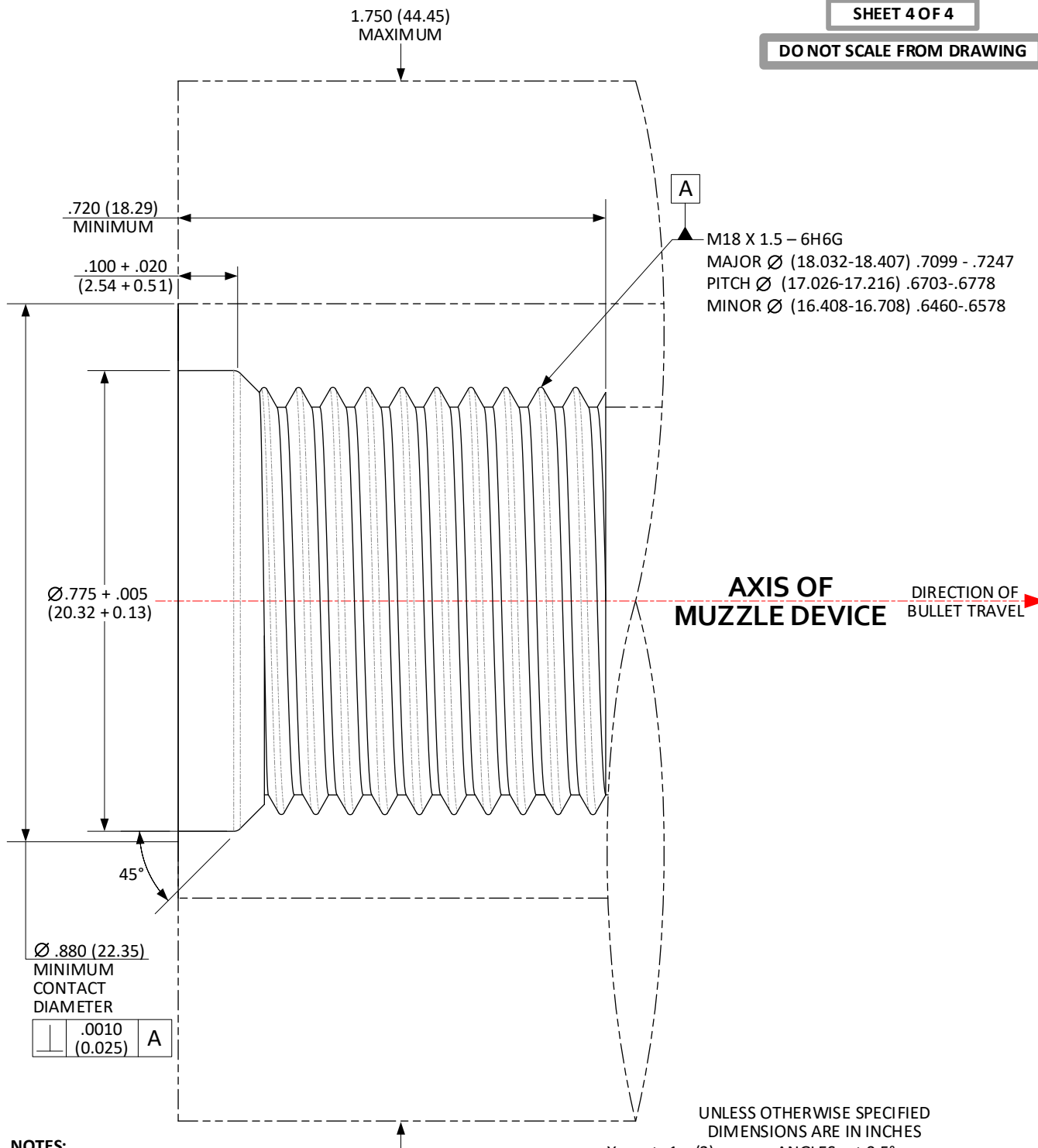
ISSUED 06/07/2022

Revised

**CFR: M18 X 1.5-6H6G; >.305 (7.75) / ≤.450 (11.43) BORE – SHOULDER INDEX (Cont'd)**

SHEET 4 OF 4

DO NOT SCALE FROM DRAWING



NOTES:

(XX.XX) = MILLIMETERS  
 DRAWING PREPARED USING THE DIMENSIONING CONVENTIONS DEFINED  
 IN ASME Y14.5-2018.

UNLESS OTHERWISE SPECIFIED  
 DIMENSIONS ARE IN INCHES

.X	±.1 (3)	ANGLES	±0.5°
.XX	±.01 (0.3)	FILLET RADII	.005-.010 (0.13-0.25)
.XXX	±.005 (0.13)	BREAK EDGE	.005-.010 (0.13-0.25)
.XXXX	±.0005 (0.013)	SURFACE FINISH	▽ (▽)