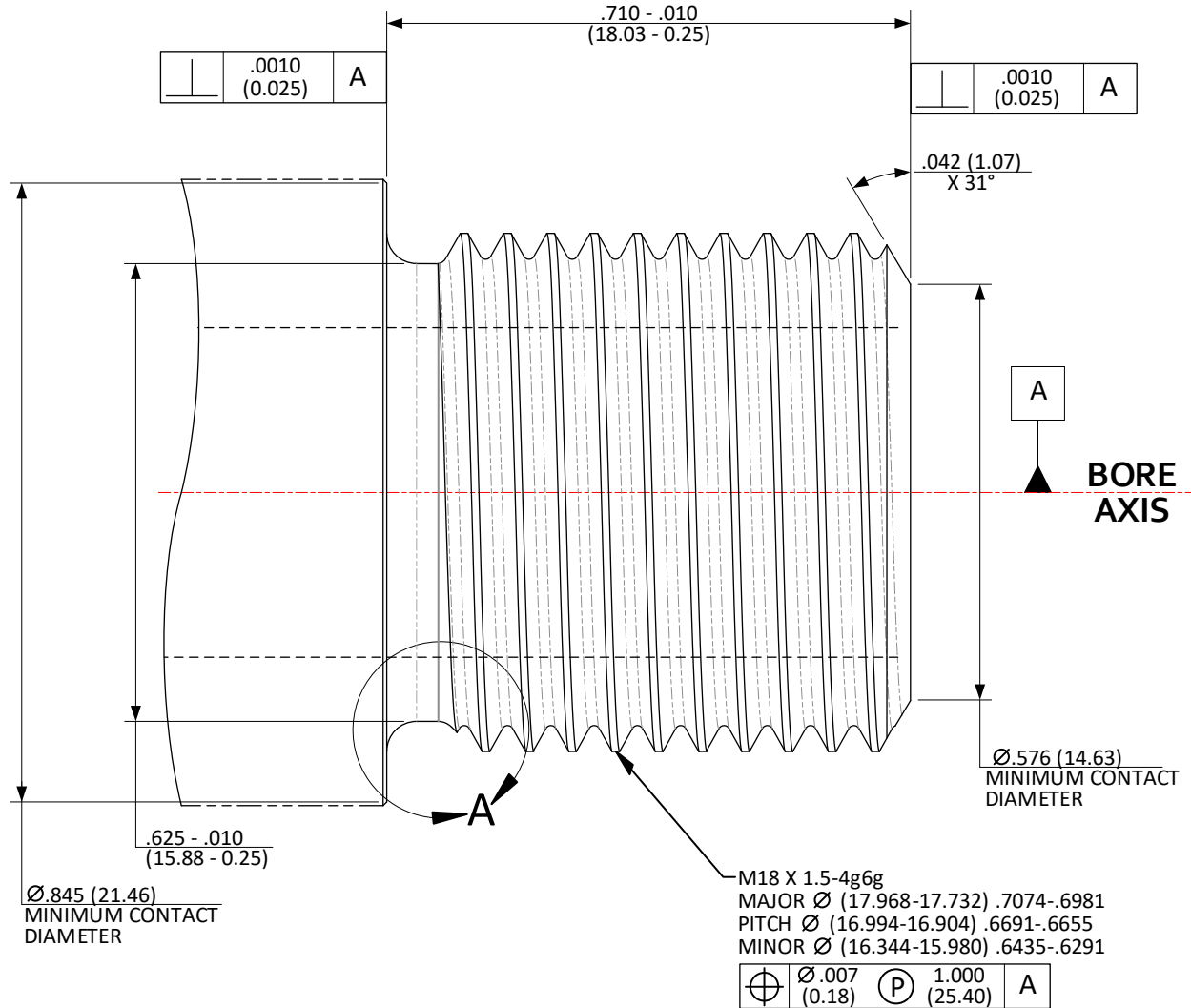


**CFR: M18 X 1.5-4g6g; >.305 (7.75) / ≤.450 (11.43) BORE – MUZZLE THREAD**

SHEET 1 OF 5



NOTE: IF THE MINIMUM SHOULDER CONTACT DIAMETER CANNOT BE ACHIEVED, MUZZLE INDEXING MUST BE USED.

**DO NOT SCALE FROM DRAWING**

**NOTES:**  
 DATUM "A" FEATURE IS DEFINED AS THE LAST  $\boxed{3.0000}$  INCHES  $\boxed{76.200}$  OF THE BORE AT THE MUZZLE END OF THE BARREL.  
 (XX.XX) = MILLIMETERS  
 DRAWING PREPARED USING THE DIMENSIONING CONVENTIONS DEFINED IN ASME Y14.5-2018.

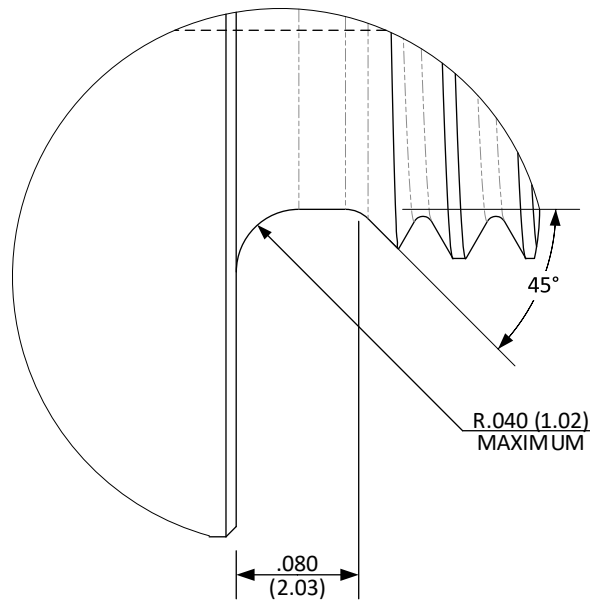
UNLESS OTHERWISE SPECIFIED DIMENSIONS ARE IN INCHES

|       |                |                |   |
|-------|----------------|----------------|---|
| .X    | ±.1 (3)        | ANGLES         | ±0.5°                                   |
| .XX   | ±.01 (0.3)     | FILLET RADII   | .005-.010 (0.13-0.25)                   |
| .XXX  | ±.005 (0.13)   | BREAK EDGE     | .005-.010 (0.13-0.25)                   |
| .XXXX | ±.0005 (0.013) | SURFACE FINISH | $\sqrt{\text{ }}$ ( $\sqrt{\text{ }}$ ) |

**CFR: M18 X 1.5-4g6g; >.305 (7.75) / ≤.450 (11.43) BORE – MUZZLE THREAD RELIEF**

SHEET 2 OF 5

**DETAIL A**



**DO NOT SCALE FROM DRAWING**

UNLESS OTHERWISE SPECIFIED DIMENSIONS ARE IN INCHES

**NOTES:**

(XX.XX) = MILLIMETERS

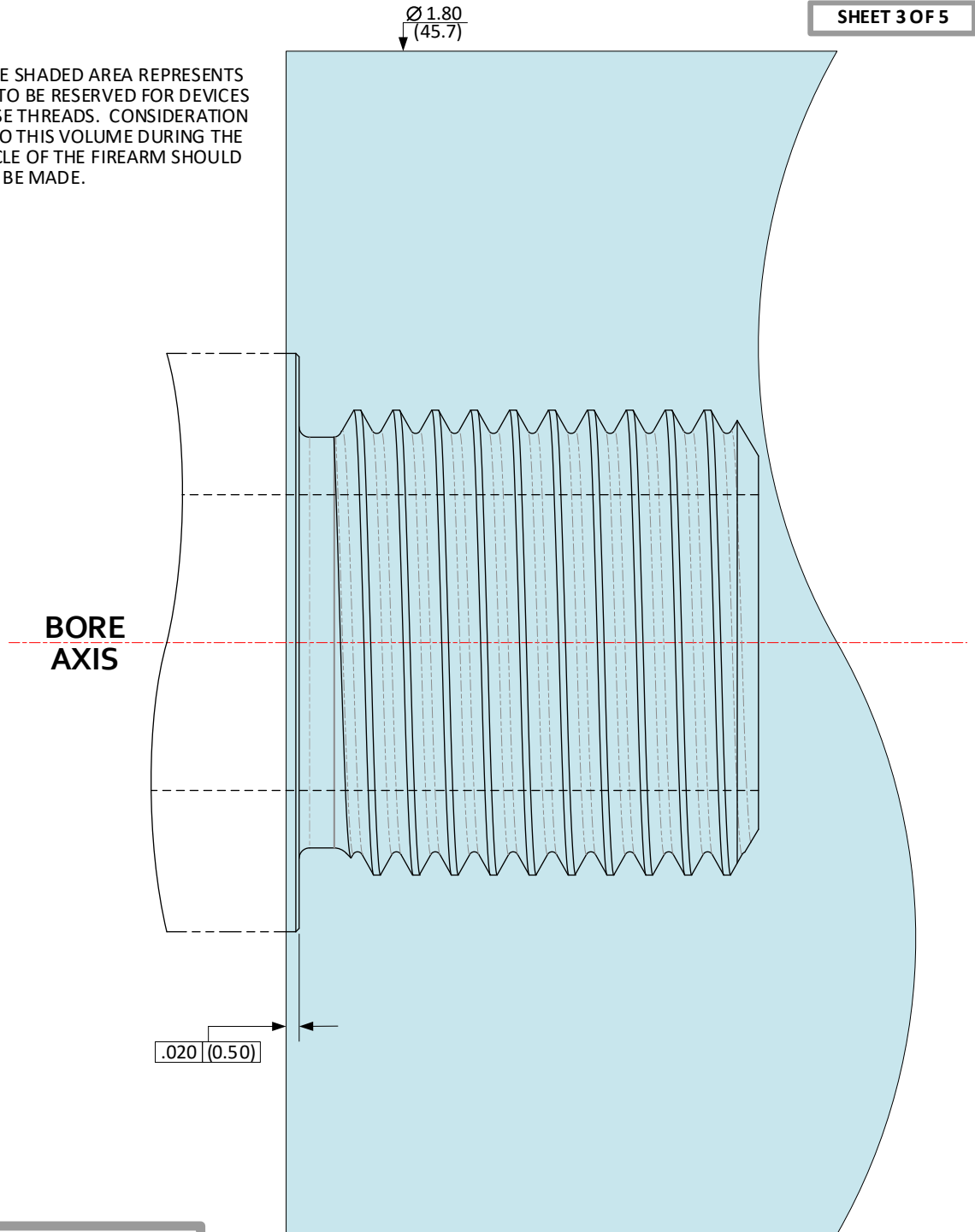
DRAWING PREPARED USING THE DIMENSIONING CONVENTIONS DEFINED IN ASME Y14.5-2018.

|                      |  |
|----------------------|--|
| .X ±.1 (3)           | ANGLES ±0.5°   |
| .XX ±.01 (0.3)       | FILLET RADII .005-.010 (0.13-0.25)                     |
| .XXX ±.005 (0.13)    | BREAK EDGE .005-.010 (0.13-0.25)                       |
| .XXXX ±.0005 (0.013) | SURFACE FINISH $\sqrt{\text{ }}$ ( $\sqrt{\text{ }}$ ) |

**CFR: M18 X 1.5-4g6g; >.305 (7.75) / ≤.450 (11.43) BORE –EXCLUSION ZONE**

SHEET 3 OF 5

AS REFERENCE, THE SHADED AREA REPRESENTS A ZONE INTENDED TO BE RESERVED FOR DEVICES ATTACHED TO THESE THREADS. CONSIDERATION OF INTRUSION INTO THIS VOLUME DURING THE ENTIRE FIRING CYCLE OF THE FIREARM SHOULD BE MADE.



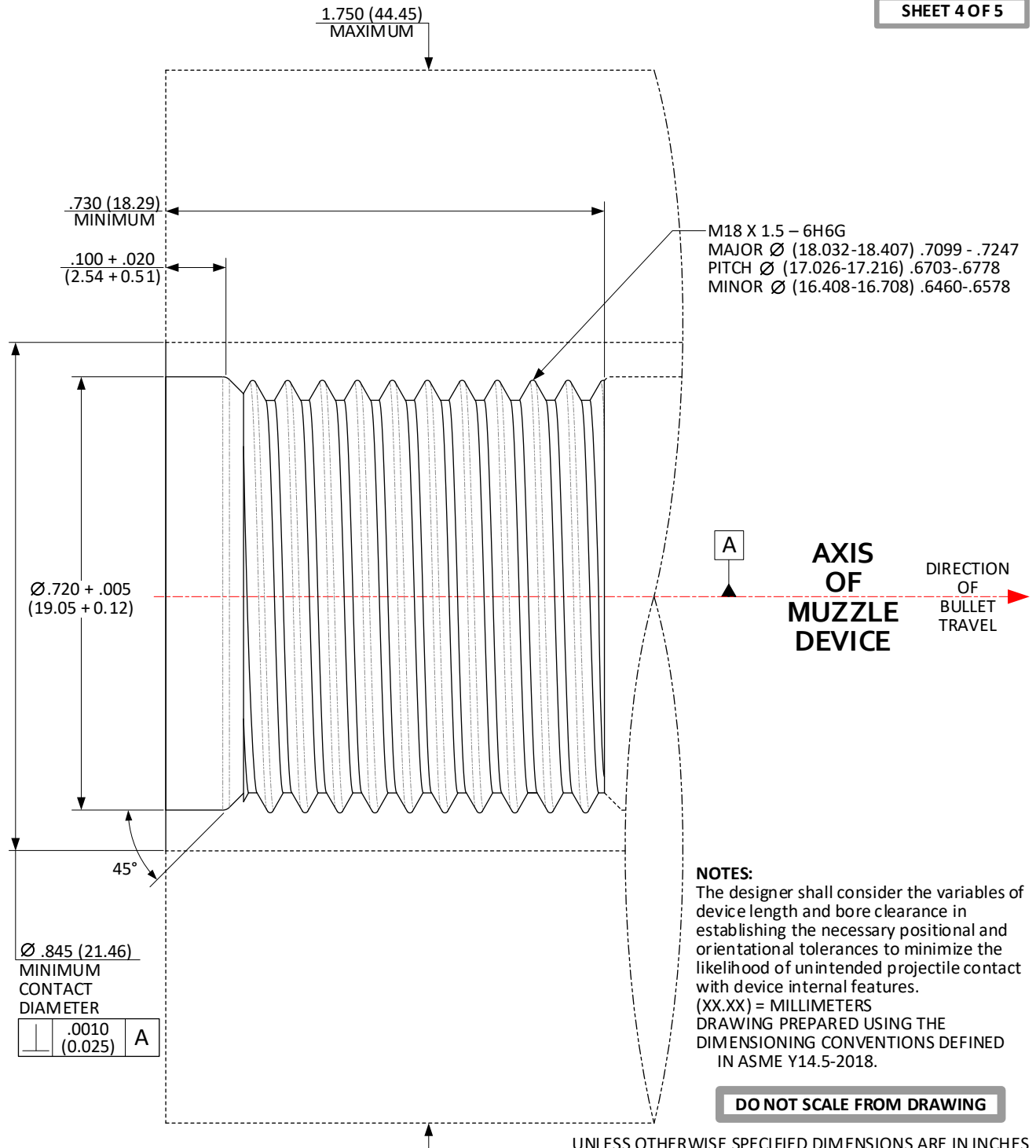
**DO NOT SCALE FROM DRAWING**

**NOTES:**  
 (XX.XX) = MILLIMETERS  
 DRAWING PREPARED USING THE DIMENSIONING CONVENTIONS DEFINED IN ASME Y14.5-2018.

UNLESS OTHERWISE SPECIFIED DIMENSIONS ARE IN INCHES  
 .X ±.1 (3) ANGLES ±0.5°  
 .XX ±.01 (0.3) FILLET RADII .005-.010 (0.13-0.25)  
 .XXX ±.005 (0.13) BREAK EDGE .005-.010 (0.13-0.25)  
 .XXXX ±.0005 (0.013) SURFACE FINISH  $\sqrt{\text{V}}$  ( $\sqrt{\text{V}}$ )

**CFR: M18 X 1.5-6H6G; >.305 (7.75) / ≤.450 (11.43) BORE –  
SOCKET THREADS; SHOULDER INDEXING**

SHEET 4 OF 5

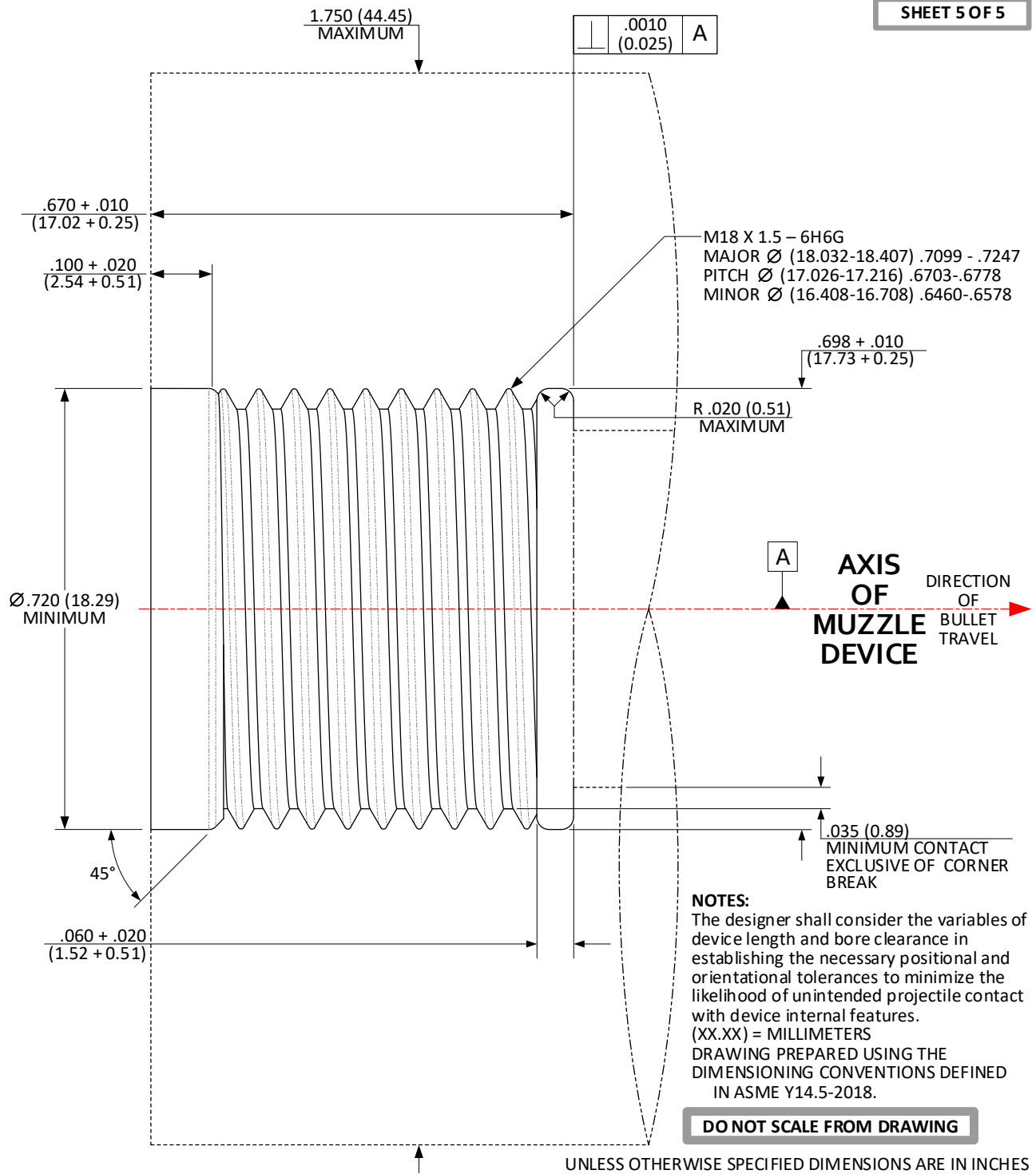


UNLESS OTHERWISE SPECIFIED DIMENSIONS ARE IN INCHES

|       |                 |                |                       |
|-------|-----------------|----------------|-----------------------|
| .X    | ± .1 (3)        | ANGLES         | ± 0.5°                |
| .XX   | ± .01 (0.3)     | FILLET RADII   | .005-.010 (0.13-0.25) |
| .XXX  | ± .005 (0.13)   | BREAK EDGE     | .005-.010 (0.13-0.25) |
| .XXXX | ± .0005 (0.013) | SURFACE FINISH | ▽ (▽)                 |

**CFR: M18 X 1.5-6H6G; >.305 (7.75) / ≤.450 (11.43) BORE –  
 SOCKET THREADS; MUZZLE INDEXING**

SHEET 5 OF 5



UNLESS OTHERWISE SPECIFIED DIMENSIONS ARE IN INCHES

|       |                |                |                       |
|-------|----------------|----------------|-----------------------|
| .X    | ±.1 (3)        | ANGLES         | ±0.5°                 |
| .XX   | ±.01 (0.3)     | FILLET RADII   | .005-.010 (0.13-0.25) |
| .XXX  | ±.005 (0.13)   | BREAK EDGE     | .005-.010 (0.13-0.25) |
| .XXXX | ±.0005 (0.013) | SURFACE FINISH | ▽ (▽)                 |