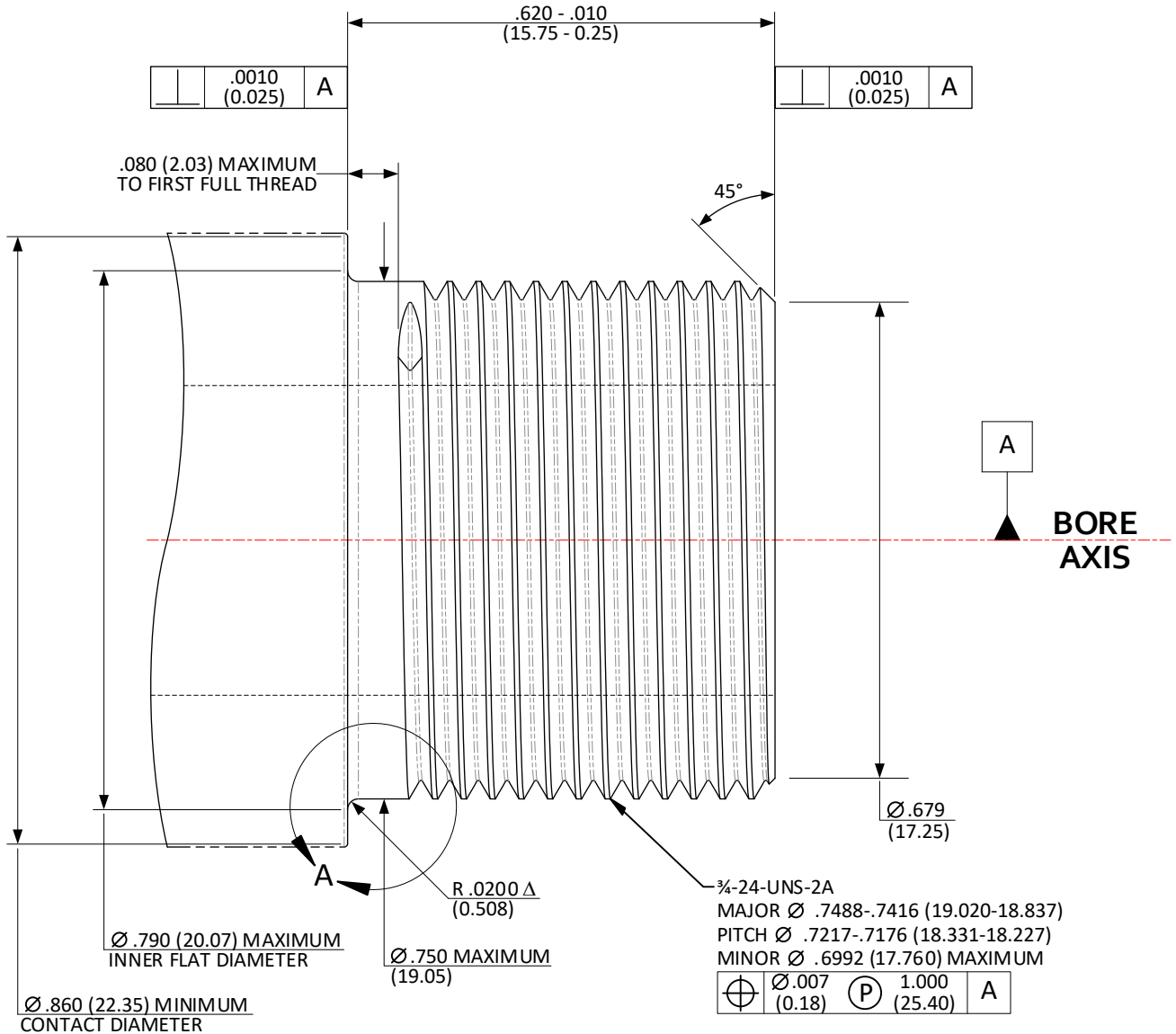


CFR: .75-24-UNS-2A; >.305 (7.75) / ≤.450 (11.43) BORE – MUZZLE THREADS

SHEET 1 OF 5



NOTE: IF THE MINIMUM SHOULDER CONTACT DIAMETER CANNOT BE ACHIEVED, MUZZLE INDEXING MUST BE USED.

DO NOT SCALE FROM DRAWING

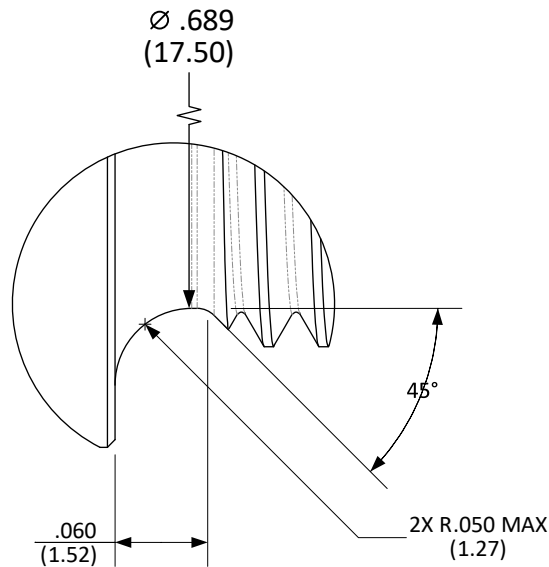
NOTES:
 DATUM "A" FEATURE IS DEFINED AS THE LAST 3.0000 INCHES (76.200) OF THE BORE AT THE MUZZLE END OF THE BARREL.
 Δ = REFERENCE (XX.XX) = MILLIMETERS
 DRAWING PREPARED USING THE DIMENSIONING CONVENTIONS DEFINED IN ASME Y14.5-2018.

UNLESS OTHERWISE SPECIFIED DIMENSIONS ARE IN INCHES
 .X ±.1 (3) ANGLES ±0.5°
 .XX ±.01 (0.3) FILLET RADII .005-.010 (0.13-0.25)
 .XXX ±.005 (0.13) BREAK EDGE .005-.010 (0.13-0.25)
 .XXXX ±.0005 (0.013) SURFACE FINISH $\sqrt{\text{XX}}$ ($\sqrt{\text{XX}}$)

CFR: .75-24-UNS-2A; >.305 (7.75) / ≤.450 (11.43) BORE – MUZZLE THREAD RELIEF

SHEET 2 OF 5

DETAIL A
OPTIONAL THREAD RELIEF



DO NOT SCALE FROM DRAWING

NOTES:
(XX.XX) = MILLIMETERS
DRAWING PREPARED USING THE DIMENSIONING CONVENTIONS DEFINED
IN ASME Y14.5-2018.

UNLESS OTHERWISE SPECIFIED DIMENSIONS ARE IN INCHES

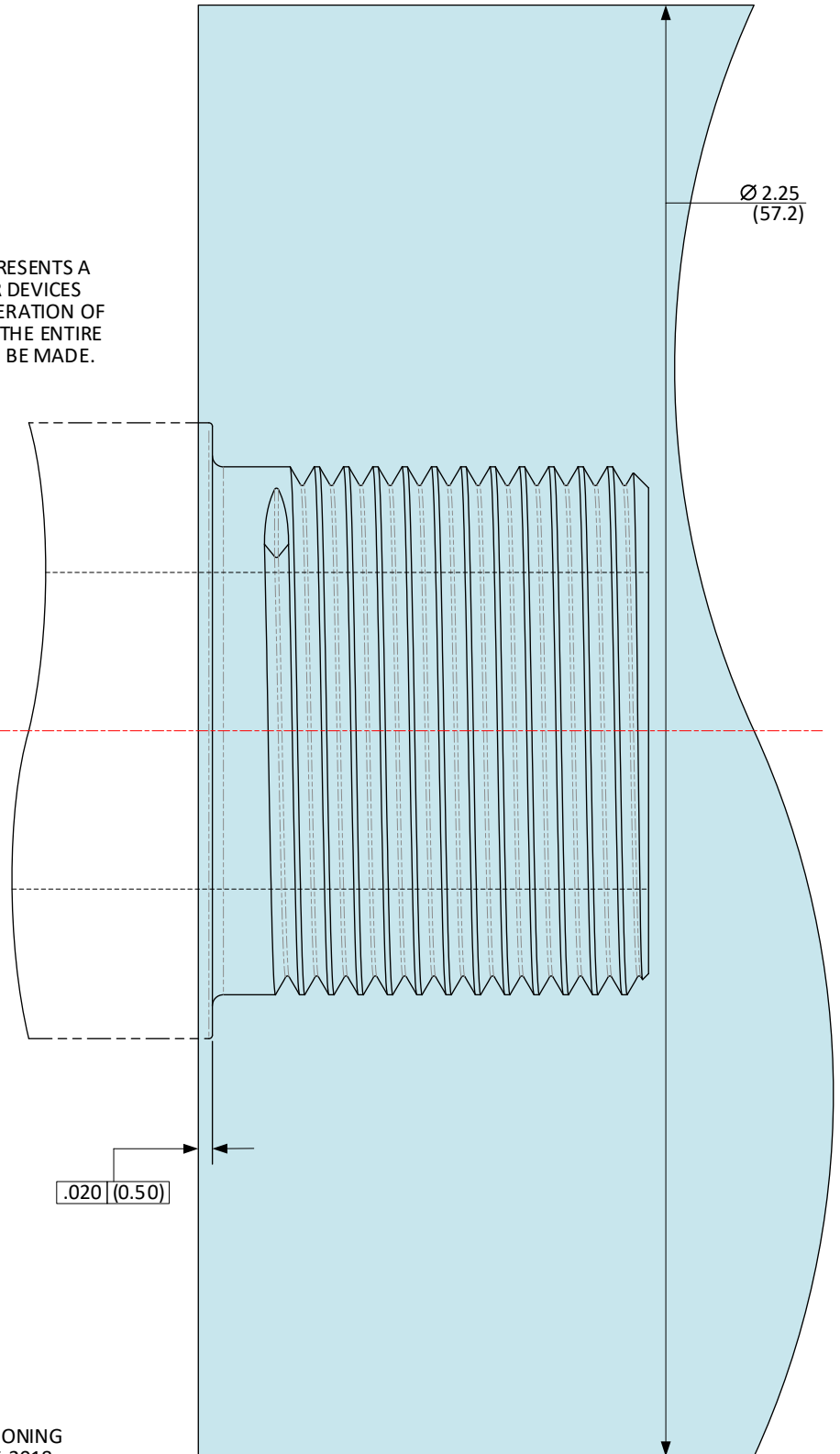
.X	±.1 (3)	ANGLES	±0.5°
.XX	±.01 (0.3)	FILLET RADII	.005-.010 (0.13-0.25)
.XXX	±.005 (0.13)	BREAK EDGE	.005-.010 (0.13-0.25)
.XXXX	±.0005 (0.013)	SURFACE FINISH	$\sqrt{\text{32}}$ ($\sqrt{1.25}$)

CFR: .75-24-UNS-2A; >.305 (7.75) / ≤.450 (11.43) BORE – EXCLUSION ZONE

SHEET 3 OF 5

AS REFERENCE, THE SHADED AREA REPRESENTS A ZONE INTENDED TO BE RESERVED FOR DEVICES ATTACHED TO THESE THREADS. CONSIDERATION OF INTRUSION INTO THIS VOLUME DURING THE ENTIRE FIRING CYCLE OF THE FIREARM SHOULD BE MADE.

**BORE
AXIS**



DO NOT SCALE FROM DRAWING

UNLESS OTHERWISE SPECIFIED
DIMENSIONS ARE IN INCHES

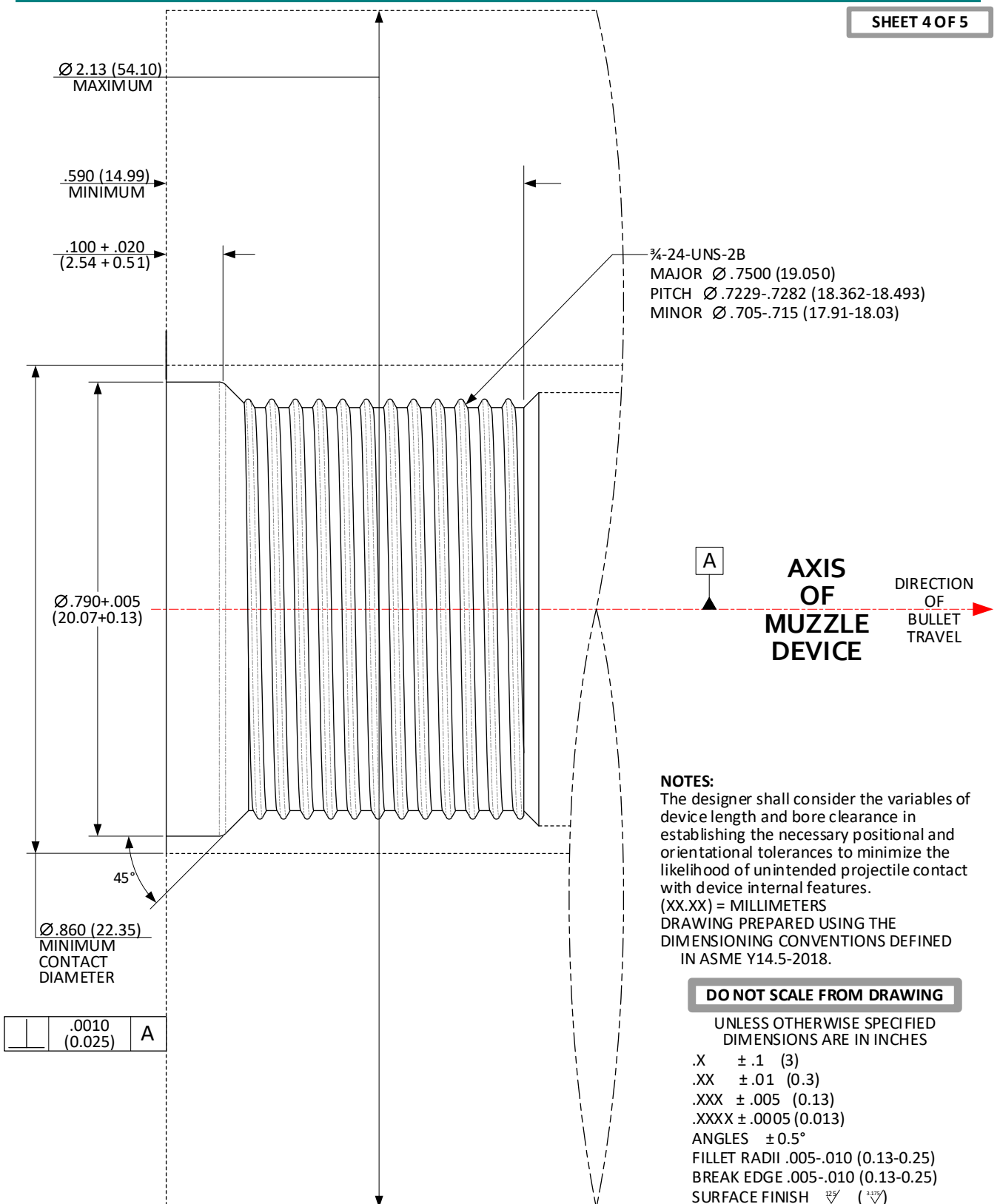
- .X ±.1 (3)
- .XX ±.01 (0.3)
- .XXX ±.005 (0.13)
- .XXXX ±.0005 (0.013)
- ANGLES ±0.5°
- FILLET RADII .005-.010 (0.13-0.25)
- BREAK EDGE .005-.010 (0.13-0.25)
- SURFACE FINISH $\sqrt{\text{ }}$ ($\sqrt{\text{ }}$)

NOTES:

(XX.XX) = MILLIMETERS
DRAWING PREPARED USING THE DIMENSIONING
CONVENTIONS DEFINED IN ASME Y14.5-2018.

**CFR: .75-24-UNS-2B; >.305 (7.75) / ≤.450 (11.43) BORE –
 SOCKET THREADS; SHOULDER INDEXING**

SHEET 4 OF 5



**CFR: .75-24-UNS-2B; >.305 (7.75) / ≤.450 (11.43) BORE –
 SOCKET THREADS; SHOULDER INDEXING**

SHEET 5 OF 5

