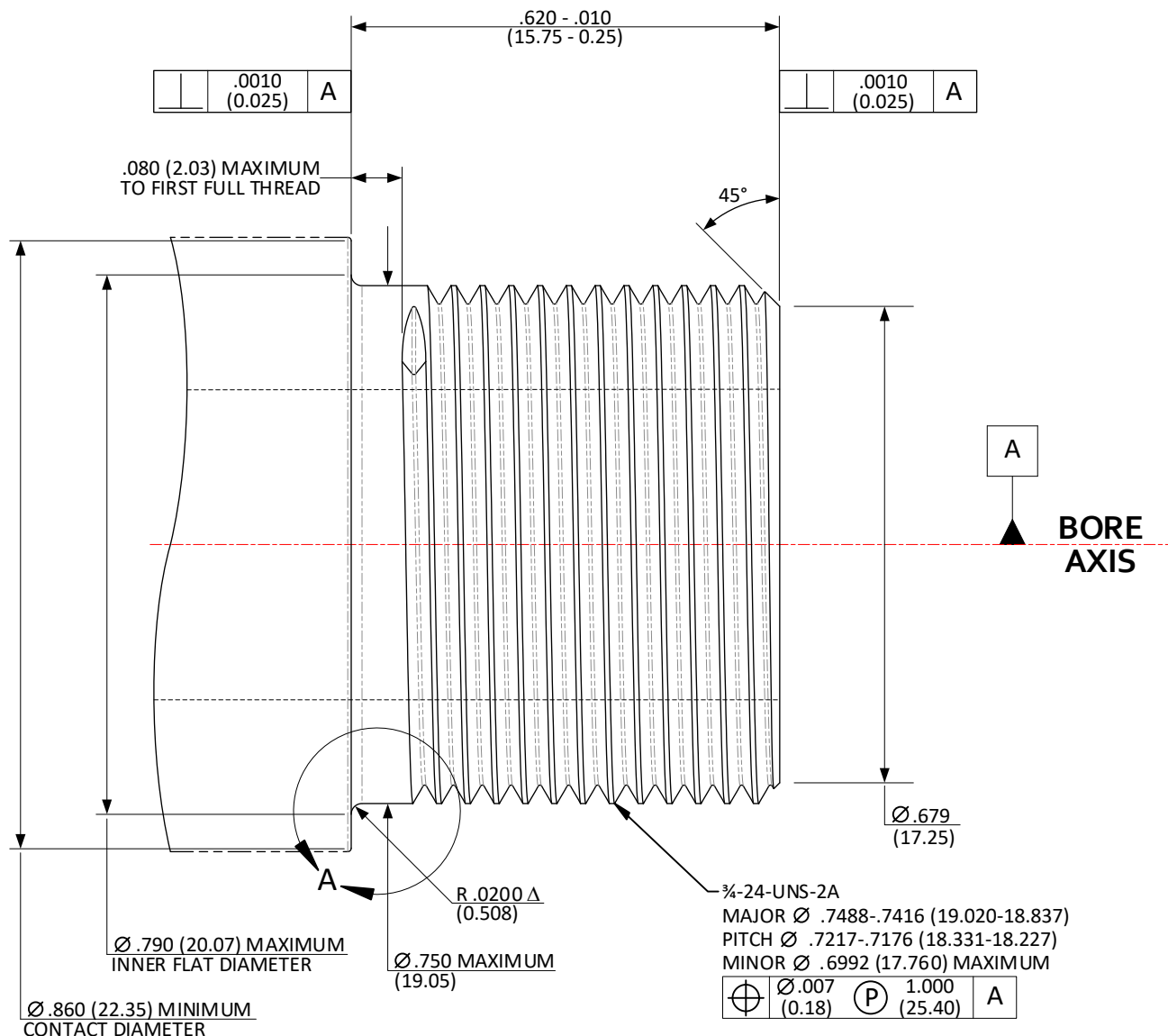


**CFR: .75-24-UNS-2A; >.305 (7.75) / ≤.450 (11.43) BORE – MUZZLE THREADS**

SHEET 1 OF 5



NOTE: IF THE MINIMUM SHOULDER CONTACT DIAMETER CANNOT BE ACHIEVED, MUZZLE INDEXING MUST BE USED.

**DO NOT SCALE FROM DRAWING**

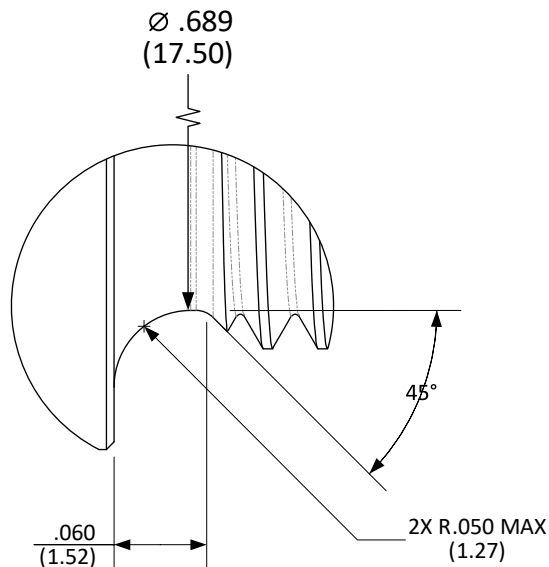
**NOTES:**  
 DATUM "A" FEATURE IS DEFINED AS THE LAST 3.0000 INCHES (76.200) OF THE BORE AT THE MUZZLE END OF THE BARREL.  
 Δ = REFERENCE (XX.XX) = MILLIMETERS  
 DRAWING PREPARED USING THE DIMENSIONING CONVENTIONS DEFINED IN ASME Y14.5-2018.

UNLESS OTHERWISE SPECIFIED DIMENSIONS ARE IN INCHES  
 .X ±.1 (3) ANGLES ±0.5°  
 .XX ±.01 (0.3) FILLET RADII .005-.010 (0.13-0.25)  
 .XXX ±.005 (0.13) BREAK EDGE .005-.010 (0.13-0.25)  
 .XXXX ±.0005 (0.013) SURFACE FINISH √ (▽)

**CFR: .75-24-UNS-2A; >.305 (7.75) / ≤.450 (11.43) BORE –  
MUZZLE THREAD RELIEF**

SHEET 2 OF 5

**DETAIL A**  
OPTIONAL THREAD RELIEF



**DO NOT SCALE FROM DRAWING**

UNLESS OTHERWISE SPECIFIED DIMENSIONS ARE IN INCHES

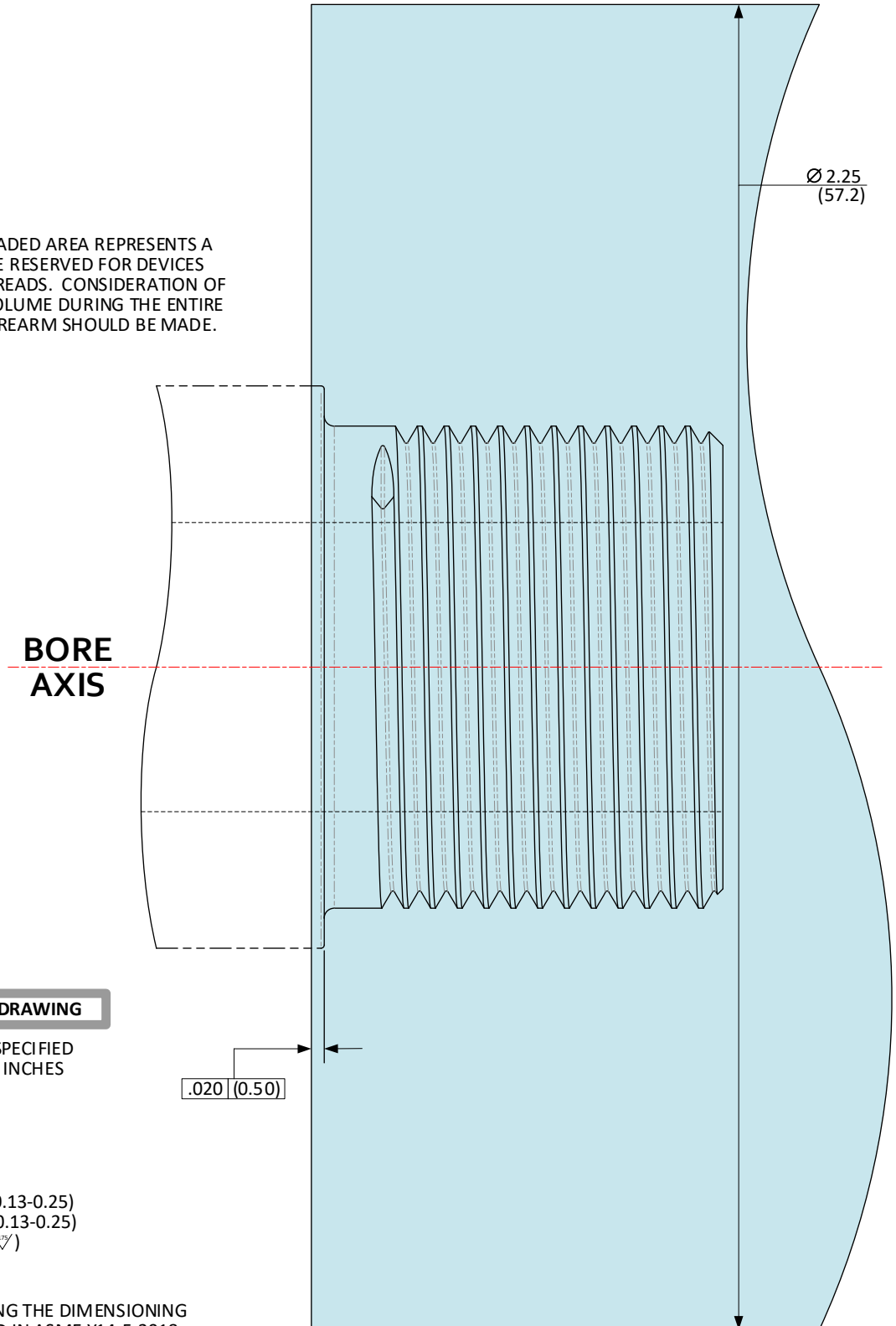
**NOTES:**  
(XX.XX) = MILLIMETERS  
DRAWING PREPARED USING THE DIMENSIONING CONVENTIONS DEFINED  
IN ASME Y14.5-2018.

.X ±.1 (3)	ANGLES ±0.5°
.XX ±.01 (0.3)	FILLET RADII .005-.010 (0.13-0.25)
.XXX ±.005 (0.13)	BREAK EDGE .005-.010 (0.13-0.25)
.XXXX ±.0005 (0.013)	SURFACE FINISH $\sqrt{\text{V}}$ ( $\sqrt{\text{V}}$ )

**CFR: .75-24-UNS-2A; >.305 (7.75) / ≤.450 (11.43) BORE –  
 EXCLUSION ZONE**

SHEET 3 OF 5

AS REFERENCE, THE SHADED AREA REPRESENTS A ZONE INTENDED TO BE RESERVED FOR DEVICES ATTACHED TO THESE THREADS. CONSIDERATION OF INTRUSION INTO THIS VOLUME DURING THE ENTIRE FIRING CYCLE OF THE FIREARM SHOULD BE MADE.



**BORE  
 AXIS**

Ø 2.25  
 (57.2)

.020 (0.50)

**DO NOT SCALE FROM DRAWING**

UNLESS OTHERWISE SPECIFIED  
 DIMENSIONS ARE IN INCHES

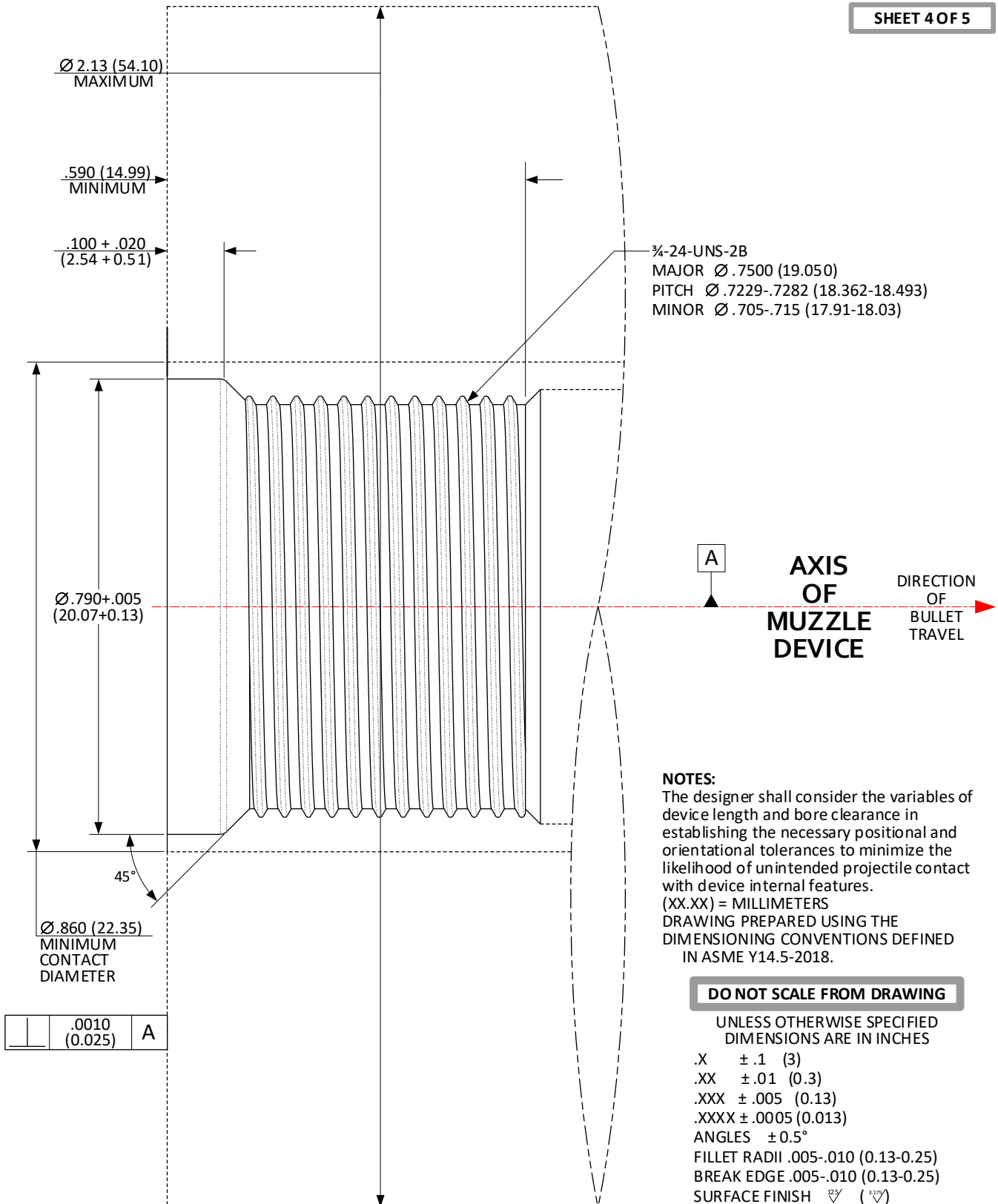
- .X ±.1 (3)
- .XX ±.01 (0.3)
- .XXX ±.005 (0.13)
- .XXXX ±.0005 (0.013)
- ANGLES ±0.5°
- FILLET RADII .005-.010 (0.13-0.25)
- BREAK EDGE .005-.010 (0.13-0.25)
- SURFACE FINISH  $\sqrt{\vee}$  ( $\sqrt{\vee}$ )

**NOTES:**

(XX.XX) = MILLIMETERS  
 DRAWING PREPARED USING THE DIMENSIONING  
 CONVENTIONS DEFINED IN ASME Y14.5-2018.

**CFR: .75-24-UNS-2B; >.305 (7.75) / ≤.450 (11.43) BORE –  
 SOCKET THREADS; SHOULDER INDEXING**

SHEET 4 OF 5



SECTION I – CHARACTERISTICS  
SUPPRESSORS  
SAAMI®

THREAD & SOCKET DRAWINGS: CFR: .75-24-UNS-2A / .75-  
24-UNS-2B; >.305 / ≤.450 BORE DIAMETER

ISSUED 06/07/2022

Revised 10/11/2024

---

**CFR: .75-24-UNS-2B; >.305 (7.75) / ≤.450 (11.43) BORE –  
SOCKET THREADS; MUZZLE INDEXING**

---

SECTION I – CHARACTERISTICS  
 SUPPRESSORS  
 SAAMI®

THREAD & SOCKET DRAWINGS: CFR: .75-24-UNS-2A / .75-24-UNS-2B; >.305 / ≤.450 BORE DIAMETER

ISSUED

06/07/2022

Revised

10/11/2024

SHEET 5 OF 5

