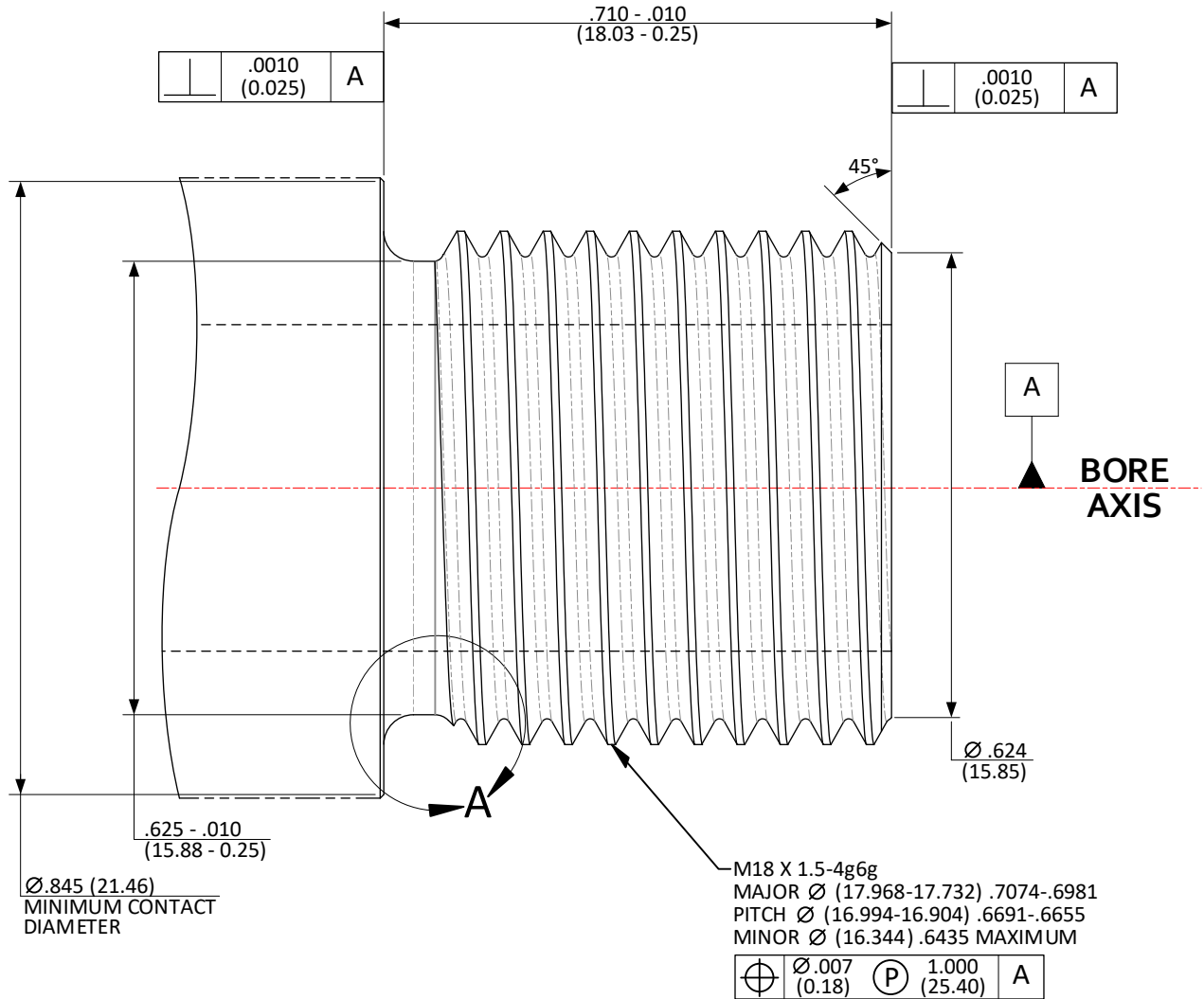


**CFR: M18 X 1.5-4g6g; >.305 (7.75) / ≤.450 (11.43) BORE –  
MUZZLE THREADS**

SHEET 1 OF 5



**NOTES:**  
 DATUM "A" FEATURE IS DEFINED AS THE LAST 3.0000 INCHES (76.200) OF THE BORE AT THE MUZZLE END OF THE BARREL.  
 (XX.XX) = MILLIMETERS  
 DRAWING PREPARED USING THE DIMENSIONING CONVENTIONS DEFINED IN ASME Y14.5-2018.

**DO NOT SCALE FROM DRAWING**

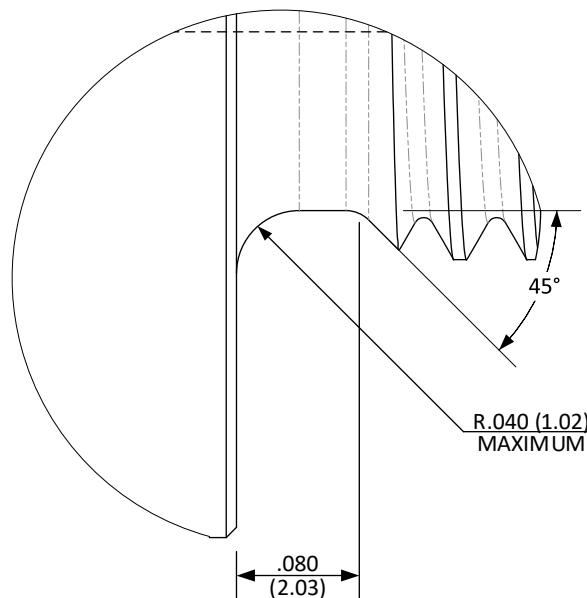
UNLESS OTHERWISE SPECIFIED DIMENSIONS ARE IN INCHES

.X ±.1 (3) ANGLES ±0.5°  
 .XX ±.01 (0.3) FILLET RADII .005-.010 (0.13-0.25)  
 .XXX ±.005 (0.13) BREAK EDGE .005-.010 (0.13-0.25)  
 .XXXX ±.0005 (0.013) SURFACE FINISH √ (√)

**CFR: M18 X 1.5-4g6g; >.305 (7.75) / ≤.450 (11.43) BORE –  
MUZZLE THREAD RELIEF**

SHEET 2 OF 5

**DETAIL A**



**DO NOT SCALE FROM DRAWING**

UNLESS OTHERWISE SPECIFIED DIMENSIONS ARE IN INCHES

**NOTES:**

(XX.XX) = MILLIMETERS

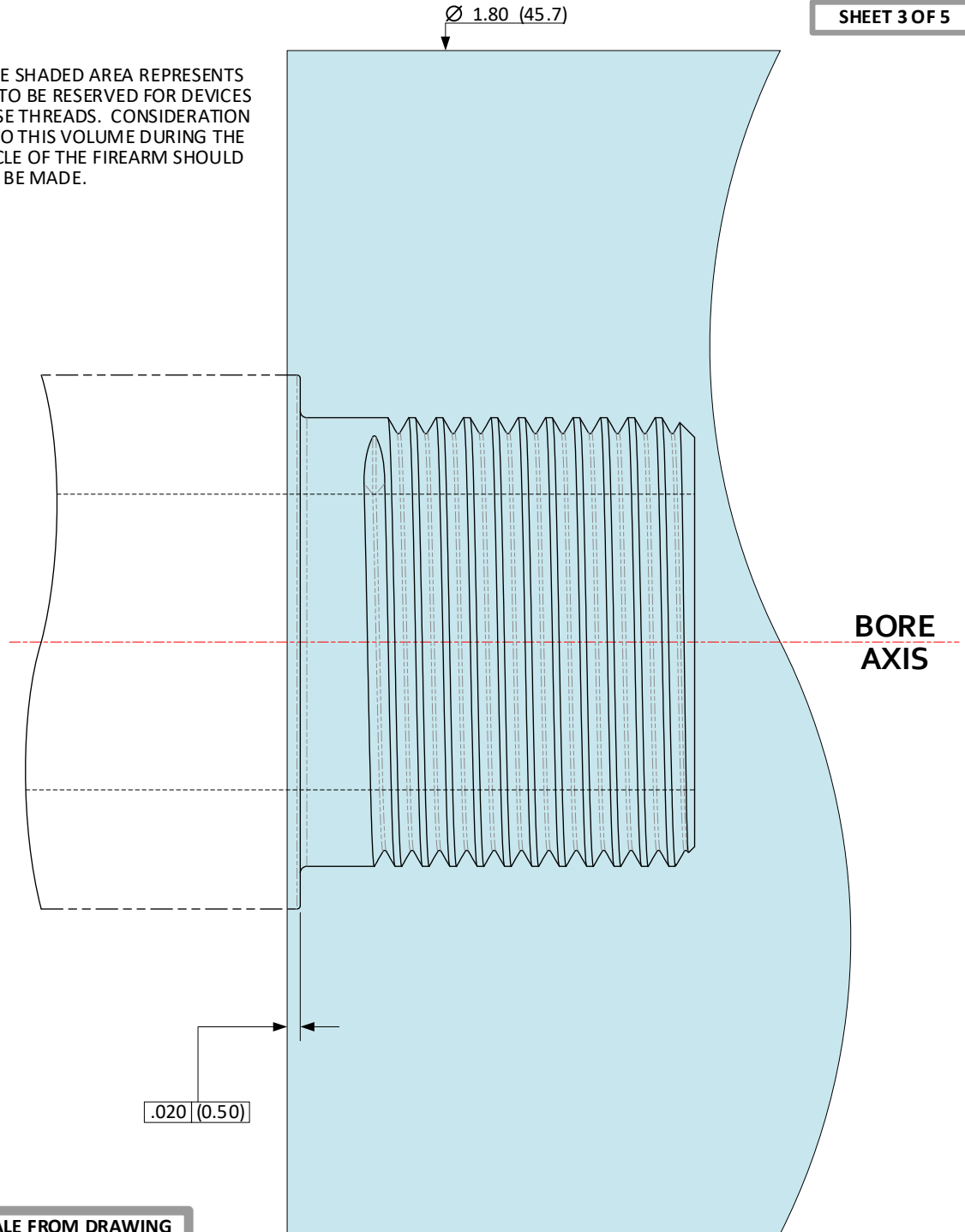
DRAWING PREPARED USING THE DIMENSIONING CONVENTIONS DEFINED  
IN ASME Y14.5-2018.

.X ±.1 (3) ANGLES ±0.5°  
.XX ±.01 (0.3) FILLET RADII .005-.010 (0.13-0.25)  
.XXX ±.005 (0.13) BREAK EDGE .005-.010 (0.13-0.25)  
.XXXX ±.0005 (0.013) SURFACE FINISH  $\sqrt{\text{V}}$  ( $\sqrt{\text{V}}$ )

**CFR: M18 X 1.5-4g6g; >.305 (7.75) / ≤.450 (11.43) BORE –  
 EXCLUSION ZONE**

SHEET 3 OF 5

AS REFERENCE, THE SHADED AREA REPRESENTS A ZONE INTENDED TO BE RESERVED FOR DEVICES ATTACHED TO THESE THREADS. CONSIDERATION OF INTRUSION INTO THIS VOLUME DURING THE ENTIRE FIRING CYCLE OF THE FIREARM SHOULD BE MADE.



**DO NOT SCALE FROM DRAWING**

**NOTES:**

(XX.XX) = MILLIMETERS

DRAWING PREPARED USING THE DIMENSIONING

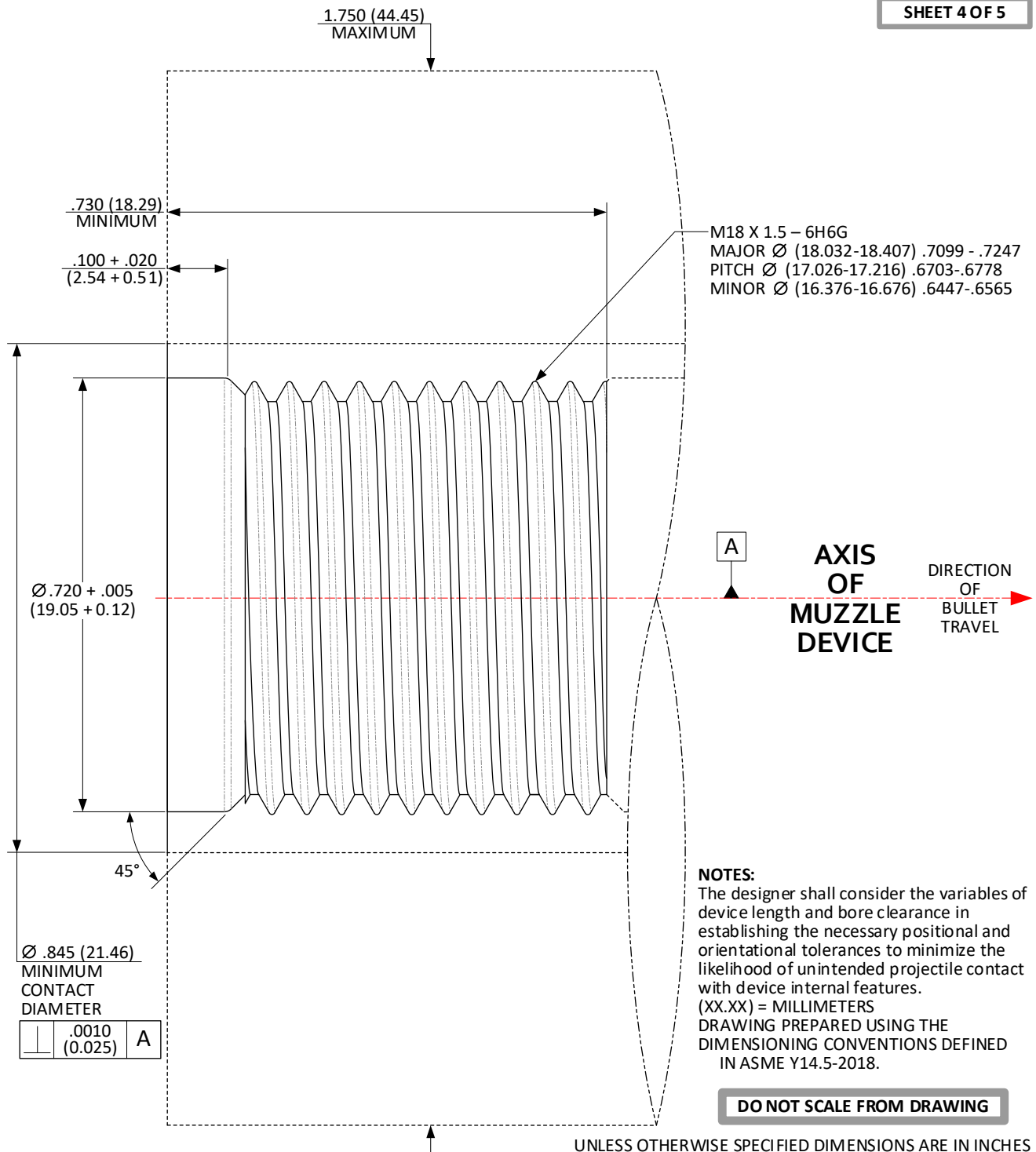
CONVENTIONS DEFINED IN ASME Y14.5-2018.

UNLESS OTHERWISE SPECIFIED DIMENSIONS ARE IN INCHES

- |       |                |                |                       |
|-------|----------------|----------------|-----------------------|
| .X    | ±.1 (3)        | ANGLES         | ±0.5°                 |
| .XX   | ±.01 (0.3)     | FILLET RADII   | .005-.010 (0.13-0.25) |
| .XXX  | ±.005 (0.13)   | BREAK EDGE     | .005-.010 (0.13-0.25) |
| .XXXX | ±.0005 (0.013) | SURFACE FINISH | √ (√)                 |

**CFR: M18 X 1.5-6H6G; >.305 (7.75) / ≤.450 (11.43) BORE –  
 SOCKET THREADS; SHOULDER INDEXING**

SHEET 4 OF 5



UNLESS OTHERWISE SPECIFIED DIMENSIONS ARE IN INCHES

.X ± .1 (3)	ANGLES ± 0.5°
.XX ± .01 (0.3)	FILLET RADII .005-.010 (0.13-0.25)
.XXX ± .005 (0.13)	BREAK EDGE .005-.010 (0.13-0.25)
.XXXX ± .0005 (0.013)	SURFACE FINISH $\sqrt{\text{R}}$ ( $\sqrt{\text{R}}$ )

