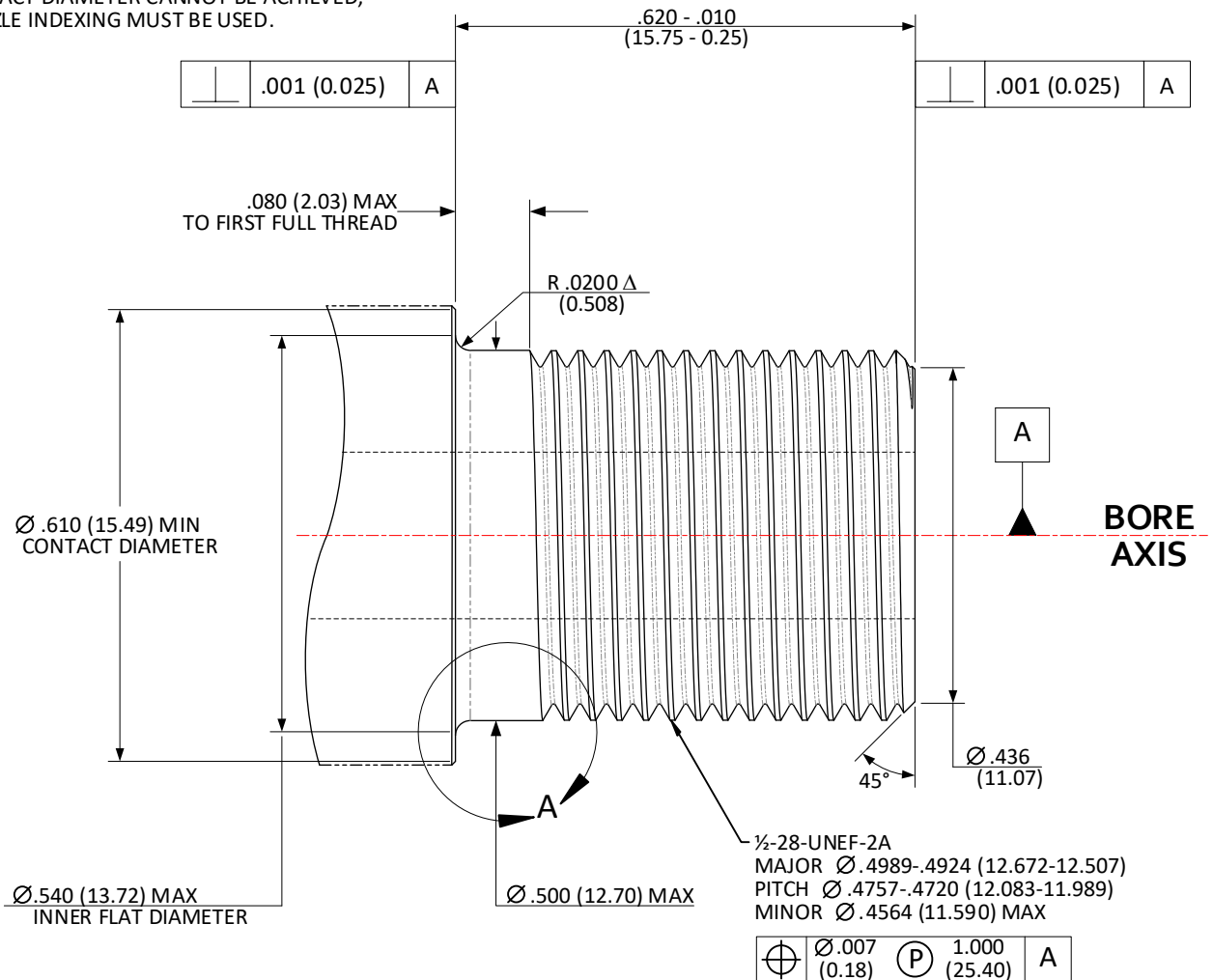


CFR: .500-28-UNEF-2A; ≤.225 (5.72) BORE – MUZZLE THREADS

SHEET 1 OF 5

NOTE: IF THE MINIMUM SHOULDER
CONTACT DIAMETER CANNOT BE ACHIEVED,
MUZZLE INDEXING MUST BE USED.



DO NOT SCALE FROM DRAWING

NOTES:

DATUM "A" FEATURE IS DEFINED AS THE LAST 3.0000 INCHES (76.200)
OF THE BORE AT THE MUZZLE END OF THE BARREL.

Δ = REFERENCE DIMENSION (XX.XX) = MILLIMETERS

DRAWING PREPARED USING THE DIMENSIONING CONVENTIONS DEFINED
IN ASME Y14.5-2018.

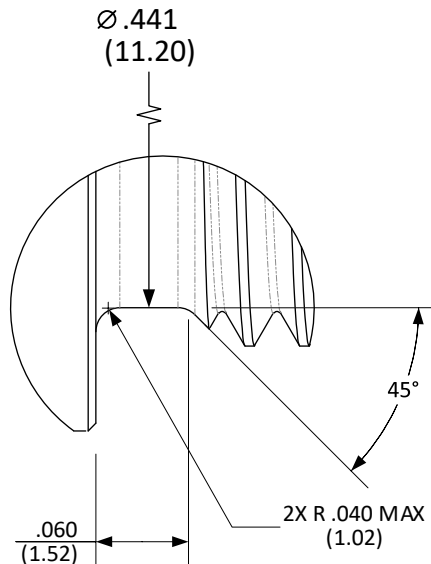
UNLESS OTHERWISE SPECIFIED DIMENSIONS ARE IN INCHES

| | |
|-----------------------|---|
| .X ± .1 (3) | ANGLES ± 0.5° |
| .XX ± .01 (0.3) | FILLET RADII .005-.010 (0.13-0.25) |
| .XXX ± .005 (0.13) | BREAK EDGE .005-.010 (0.13-0.25) |
| .XXXX ± .0005 (0.013) | SURFACE FINISH $\sqrt{125}$ ($\sqrt{1175}$) |

CFR: .500-28-UNEF-2A; ≤.225 (5.72) BORE – MUZZLE THREAD RELIEF

SHEET 2 OF 5

DETAIL A OPTIONAL THREAD RELIEF



DO NOT SCALE FROM DRAWING

UNLESS OTHERWISE SPECIFIED DIMENSIONS ARE IN INCHES

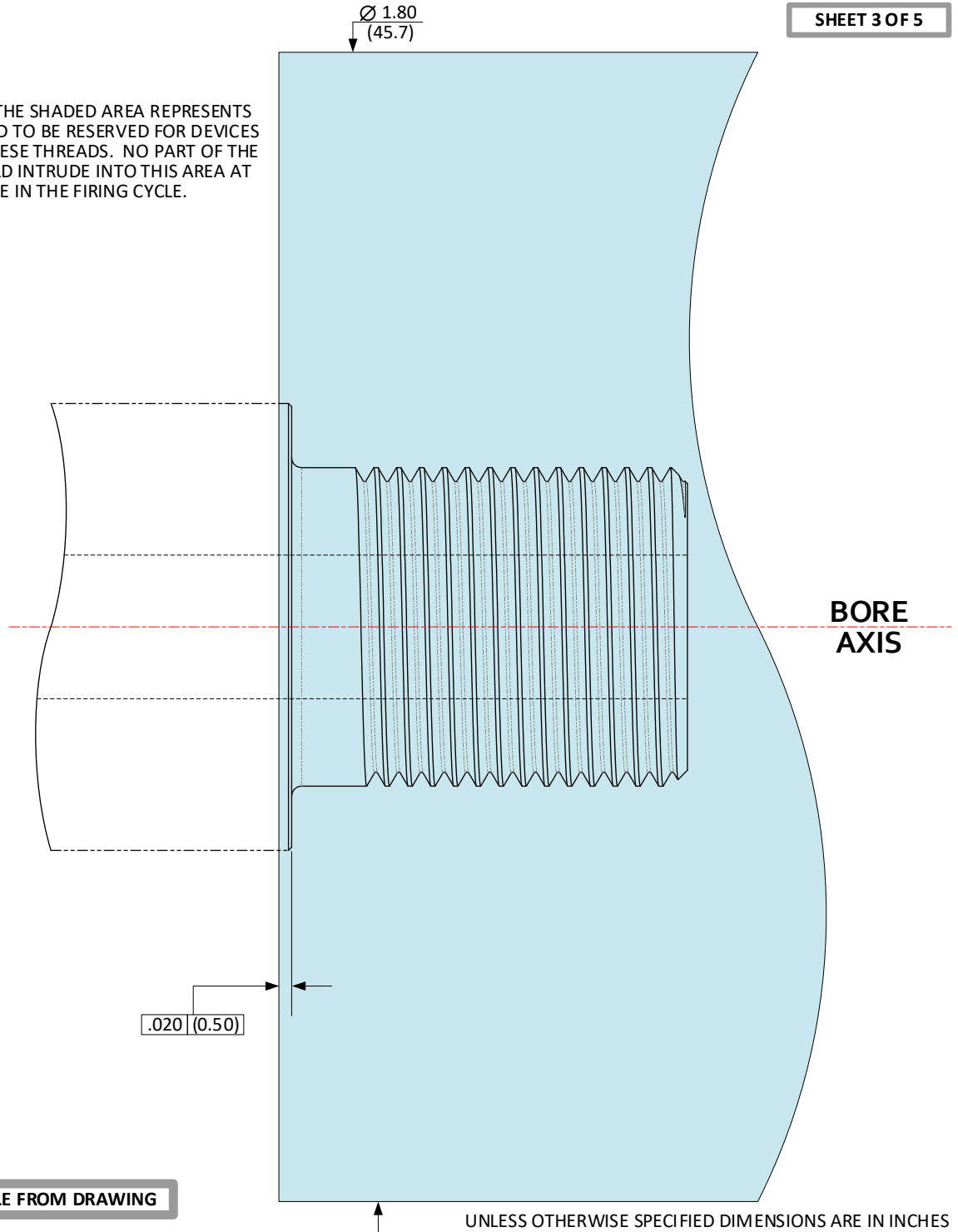
NOTES:
(XX.XX) = MILLIMETERS
DRAWING PREPARED USING THE DIMENSIONING CONVENTIONS DEFINED
IN ASME Y14.5-2018.

| | | | | |
|-------|--------|---------|----------------|--------------------------------|
| .X | ±.1 | (3) | ANGLES | ±0.5° |
| .XX | ±.01 | (0.3) | FILLET RADII | .005-.010 (0.13-0.25) |
| .XXX | ±.005 | (0.13) | BREAK EDGE | .005-.010 (0.13-0.25) |
| .XXXX | ±.0005 | (0.013) | SURFACE FINISH | $\sqrt{125}$ ($\sqrt{1175}$) |

CFR: .500-28-UNEF-2A; ≤.225 (5.72) BORE – EXCLUSION ZONE

SHEET 3 OF 5

AS REFERENCE, THE SHADED AREA REPRESENTS
A ZONE INTENDED TO BE RESERVED FOR DEVICES
ATTACHED TO THESE THREADS. NO PART OF THE
FIREARM SHOULD INTRUDE INTO THIS AREA AT
ANY TIME IN THE FIRING CYCLE.



DO NOT SCALE FROM DRAWING

NOTES:

(XX.XX) = MILLIMETERS

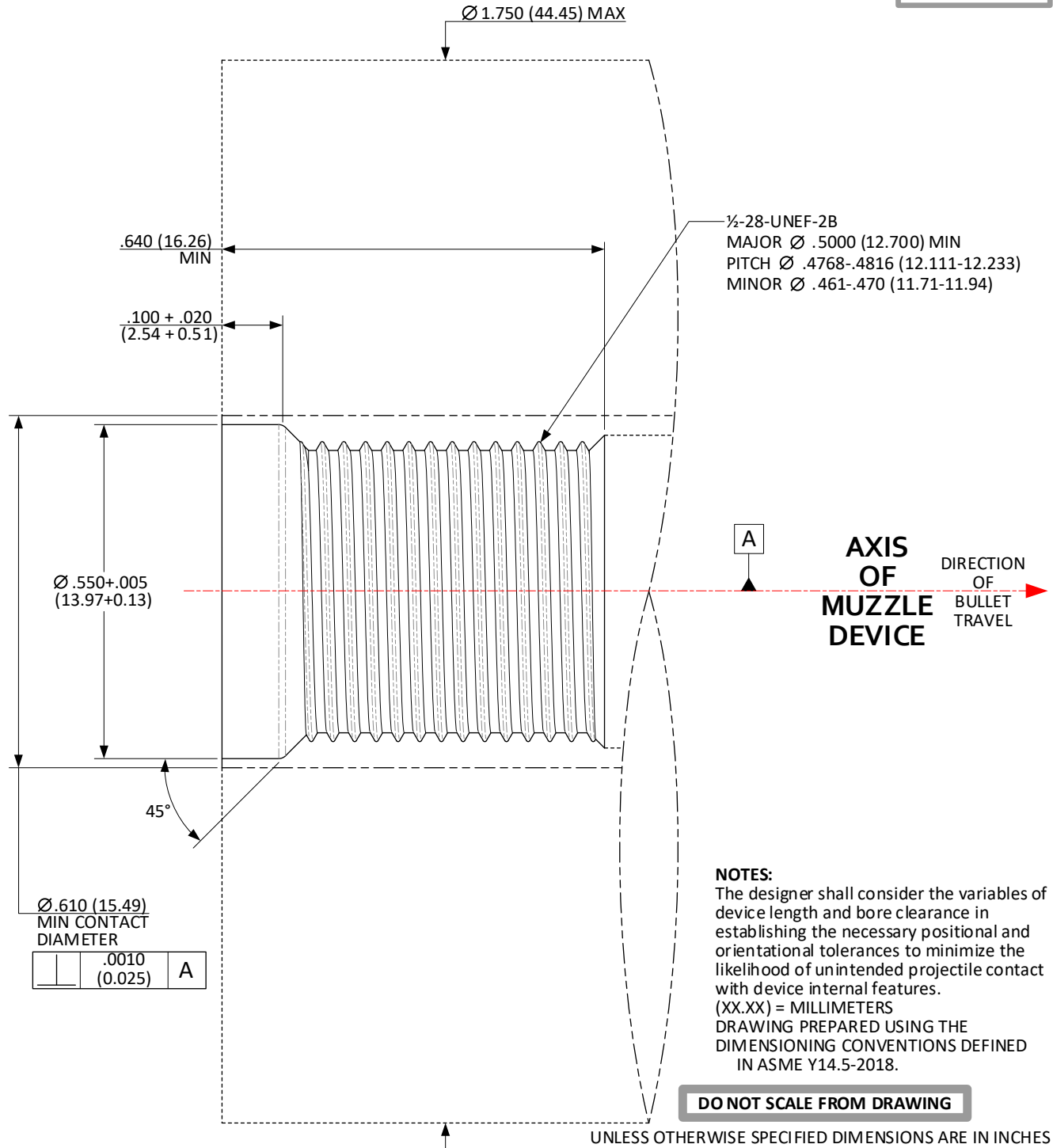
DRAWING PREPARED USING THE DIMENSIONING
CONVENTIONS DEFINED IN ASME Y14.5-2018.

UNLESS OTHERWISE SPECIFIED DIMENSIONS ARE IN INCHES

| | | | |
|----------------------|--------------|----------------|---|
| .X | ±.1 (3) | ANGLES | ±0.5° |
| .XX | ±.01 (0.3) | FILLET RADII | .005-.010 (0.13-0.25) |
| .XXX | ±.005 (0.13) | BREAK EDGE | .005-.010 (0.13-0.25) |
| .XXXX ±.0005 (0.013) | | SURFACE FINISH | $\sqrt{\text{V}}$ ($\sqrt{\text{V}}$) |

CFR: .500-28-UNEF-2B; ≤.225 (5.72) BORE - SOCKET THREADS; SHOULDER INDEXING

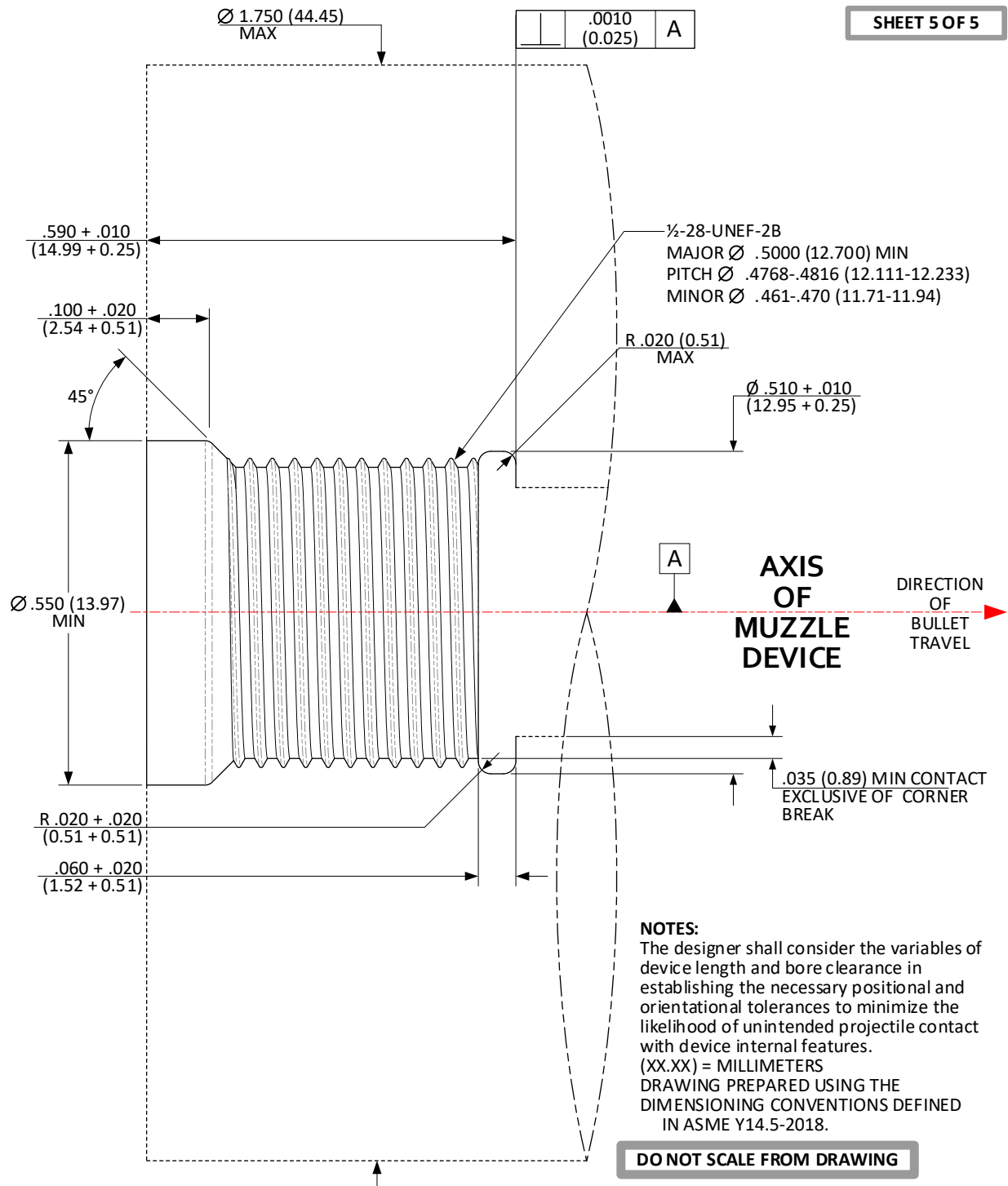
SHEET 4 OF 5



UNLESS OTHERWISE SPECIFIED DIMENSIONS ARE IN INCHES

| | | | |
|-------|-----------------|----------------|-----------------------|
| .X | ± .1 (3) | ANGLES | ± 0.5° |
| .XX | ± .01 (0.3) | FILLET RADII | .005-.010 (0.13-0.25) |
| .XXX | ± .005 (0.13) | BREAK EDGE | .005-.010 (0.13-0.25) |
| .XXXX | ± .0005 (0.013) | SURFACE FINISH | √ (√) |

**CFR: .500-28-UNEF-2B; ≤.225 (5.72) BORE
SOCKET THREADS; MUZZLE INDEXING**



UNLESS OTHERWISE SPECIFIED DIMENSIONS ARE IN INCHES

| | | | |
|-------|----------------|----------------|---------------------------------------|
| .X | ±.1 (3) | ANGLES | ±0.5° |
| .XX | ±.01 (0.3) | FILLET RADII | .005-.010 (0.13-0.25) |
| .XXX | ±.005 (0.13) | BREAK EDGE | .005-.010 (0.13-0.25) |
| .XXXX | ±.0005 (0.013) | SURFACE FINISH | ▽ ²⁵ / (▽ ³²⁵) |