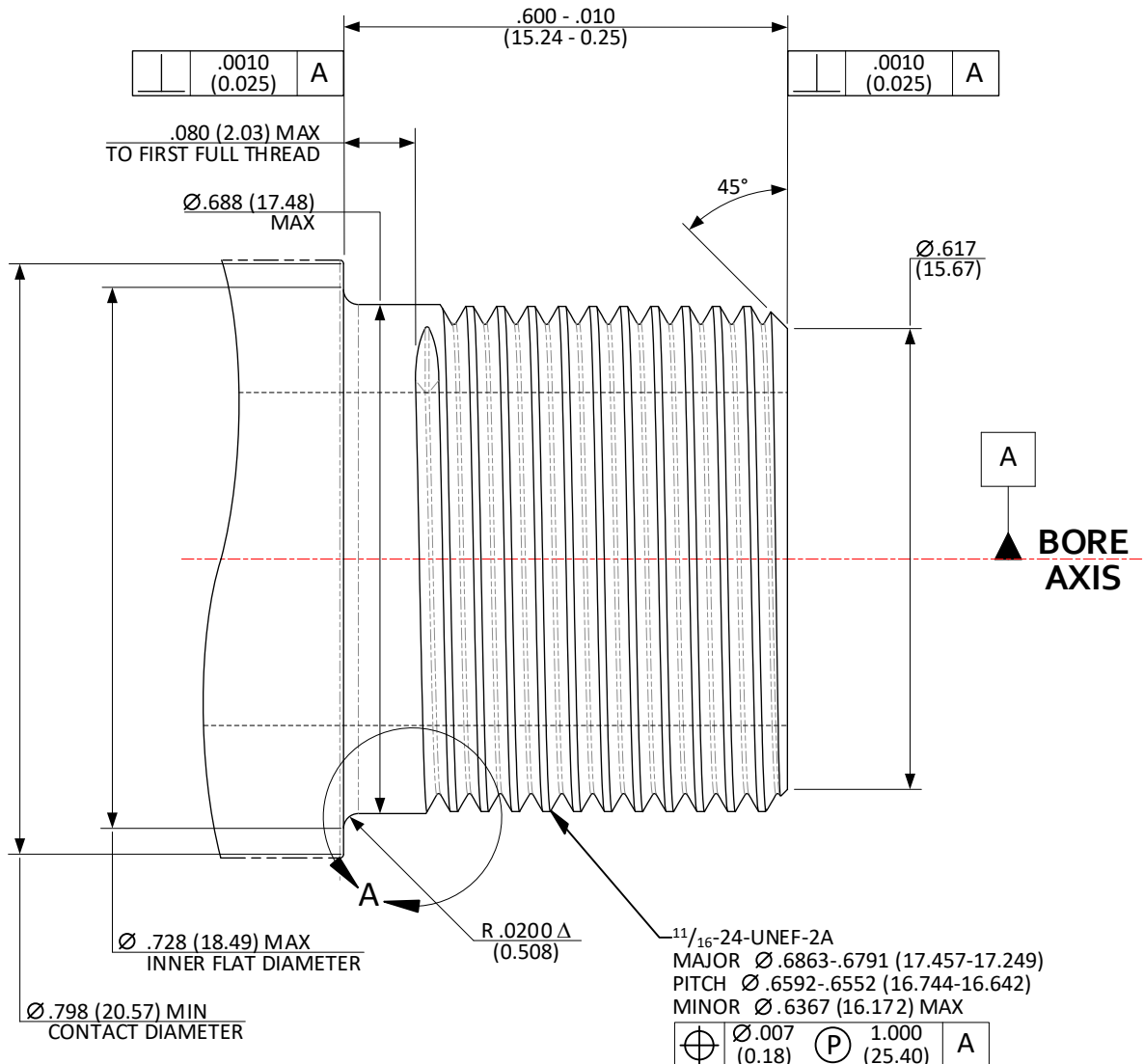


CFR: .6875-24-UNEF-2A; >.305 (7.75) / ≤.450 (11.43) BORE – MUZZLE THREADS

SHEET 1 OF 5



NOTE: IF THE MINIMUM SHOULDER
CONTACT DIAMETER CANNOT BE ACHIEVED,
MUZZLE INDEXING MUST BE USED.

NOTES:

DATUM "A" FEATURE IS DEFINED AS THE LAST $\boxed{3.0000}$ INCHES $\boxed{76.200}$
OF THE BORE AT THE MUZZLE END OF THE BARREL.

Δ = REFERENCE DIMENSION (XX.XX) = MILLIMETERS

DRAWING PREPARED USING THE DIMENSIONING CONVENTIONS DEFINED
IN ASME Y14.5-2018.

DO NOT SCALE FROM DRAWING

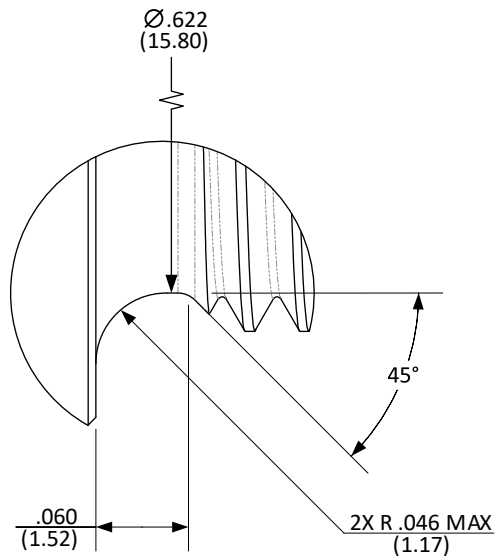
UNLESS OTHERWISE SPECIFIED DIMENSIONS ARE IN INCHES

.X ±.1 (3) ANGLES ±0.5°
.XX ±.01 (0.3) FILLET RADII .005-.010 (0.13-0.25)
.XXX ±.005 (0.13) BREAK EDGE .005-.010 (0.13-0.25)
.XXXX ±.0005 (0.013) SURFACE FINISH $\sqrt{.007}$ ($\sqrt{.125}$)

**CFR: .6875-24-UNEF-2A; >.305 (7.75) / ≤.450 (11.43) BORE –
MUZZLE THREAD RELIEF**

SHEET 2 OF 5

**DETAIL A
OPTIONAL THREAD RELIEF**



DO NOT SCALE FROM DRAWING

UNLESS OTHERWISE SPECIFIED DIMENSIONS ARE IN INCHES

NOTES:

(XX.XX) = MILLIMETERS

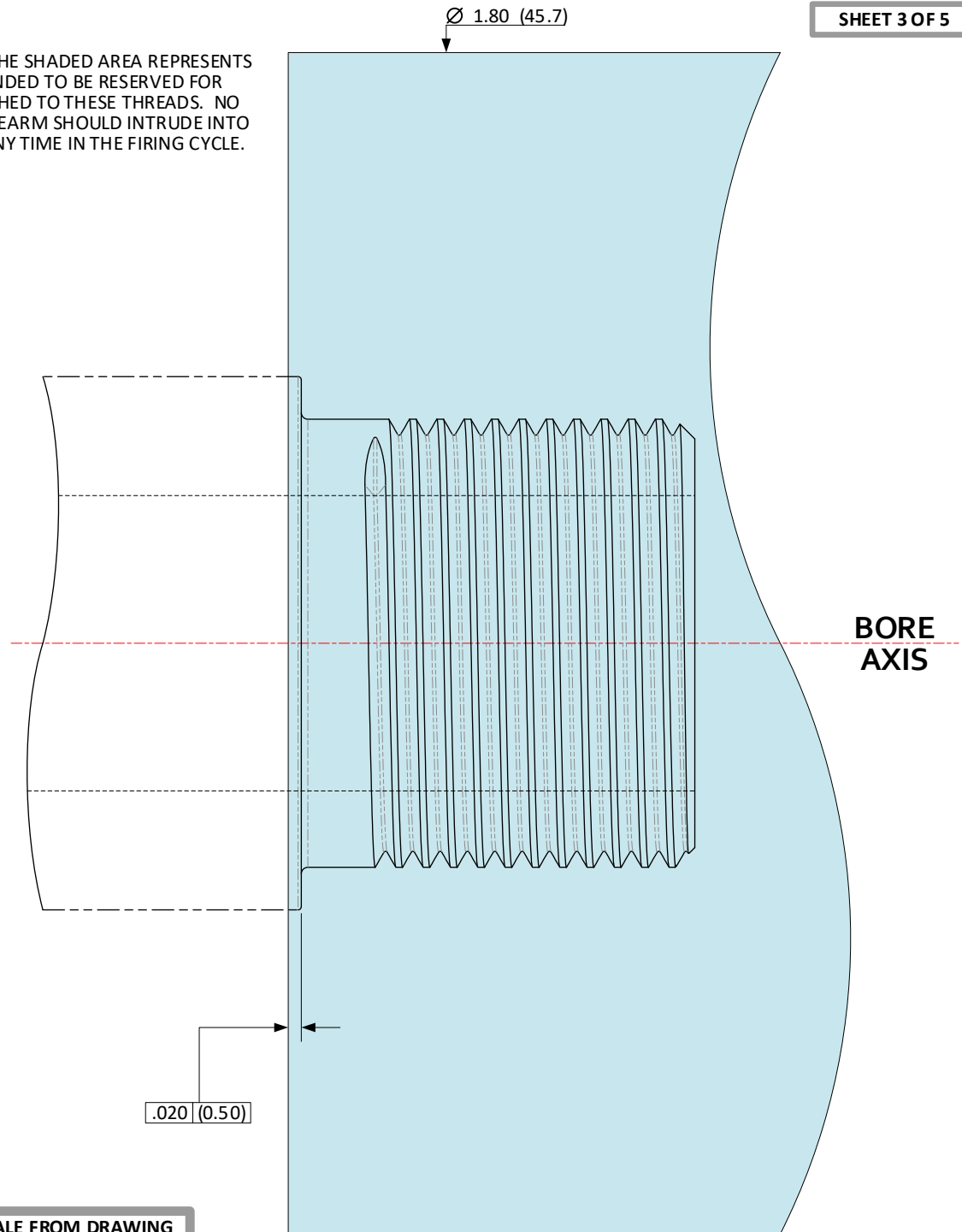
DRAWING PREPARED USING THE DIMENSIONING CONVENTIONS DEFINED
IN ASME Y14.5-2018.

.X	±.1 (3)	ANGLES	±0.5°
.XX	±.01 (0.3)	FILLET RADII	.005-.010 (0.13-0.25)
.XXX	±.005 (0.13)	BREAK EDGE	.005-.010 (0.13-0.25)
.XXXX	±.0005 (0.013)	SURFACE FINISH	12 $\sqrt{\text{ }}$ (3.17 $\sqrt{\text{ }}$)

**CFR: .6875-24-UNEF-2A; >.305 (7.75) / ≤.450 (11.43) BORE –
EXCLUSION ZONE**

SHEET 3 OF 5

AS REFERENCE, THE SHADED AREA REPRESENTS
A ZONE INTENDED TO BE RESERVED FOR
DEVICES ATTACHED TO THESE THREADS. NO
PART OF THE FIREARM SHOULD INTRUDE INTO
THIS AREA AT ANY TIME IN THE FIRING CYCLE.



NOTES:

(XX.XX) = MILLIMETERS

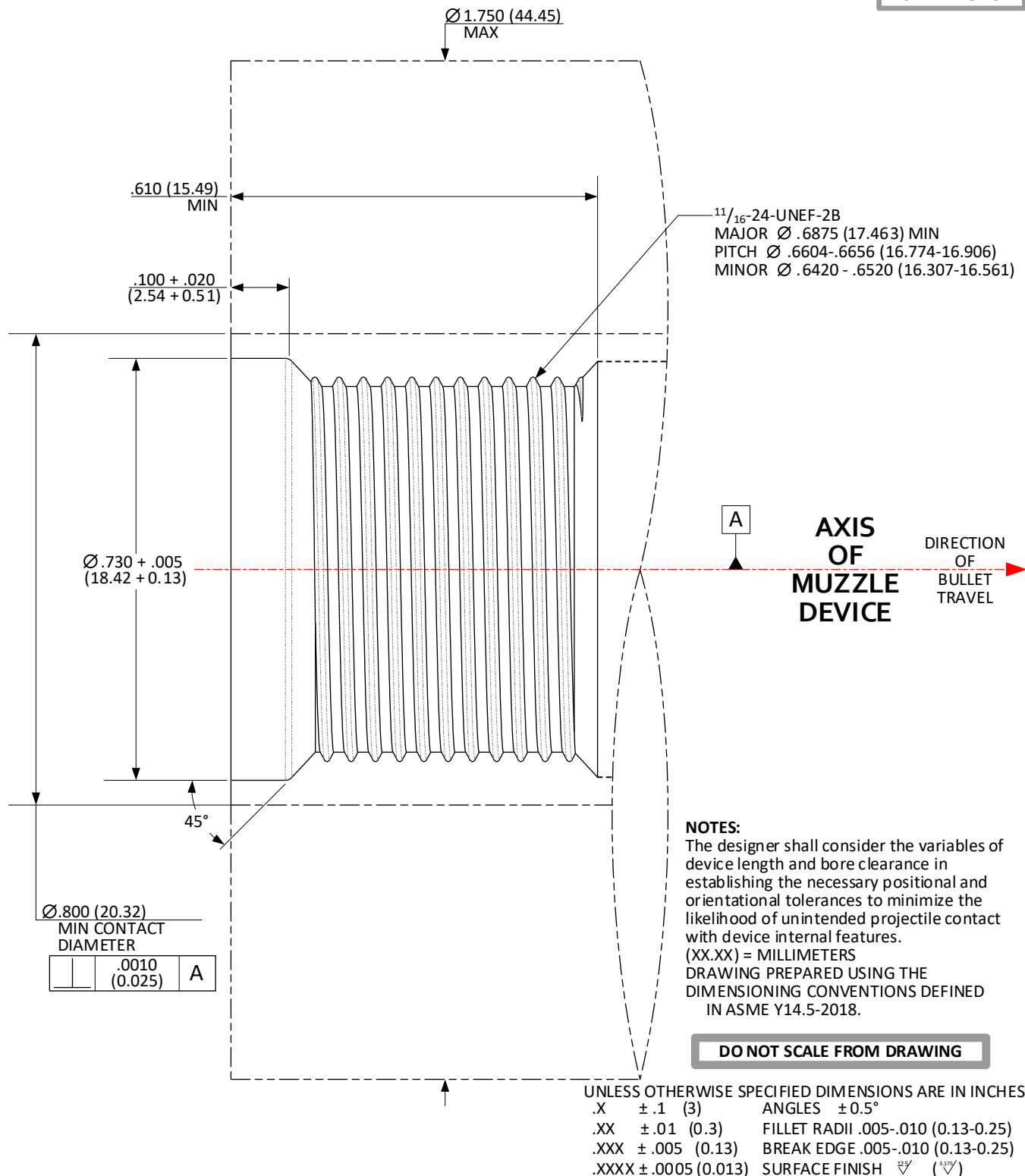
DRAWING PREPARED USING THE DIMENSIONING
CONVENTIONS DEFINED IN ASME Y14.5-2018.

UNLESS OTHERWISE SPECIFIED DIMENSIONS ARE IN INCHES

.X	±.1 (3)	ANGLES	±0.5°
.XX	±.01 (0.3)	FILLET RADII	.005-.010 (0.13-0.25)
.XXX	±.005 (0.13)	BREAK EDGE	.005-.010 (0.13-0.25)
.XXXX	±.0005 (0.013)	SURFACE FINISH	▽ (▽)

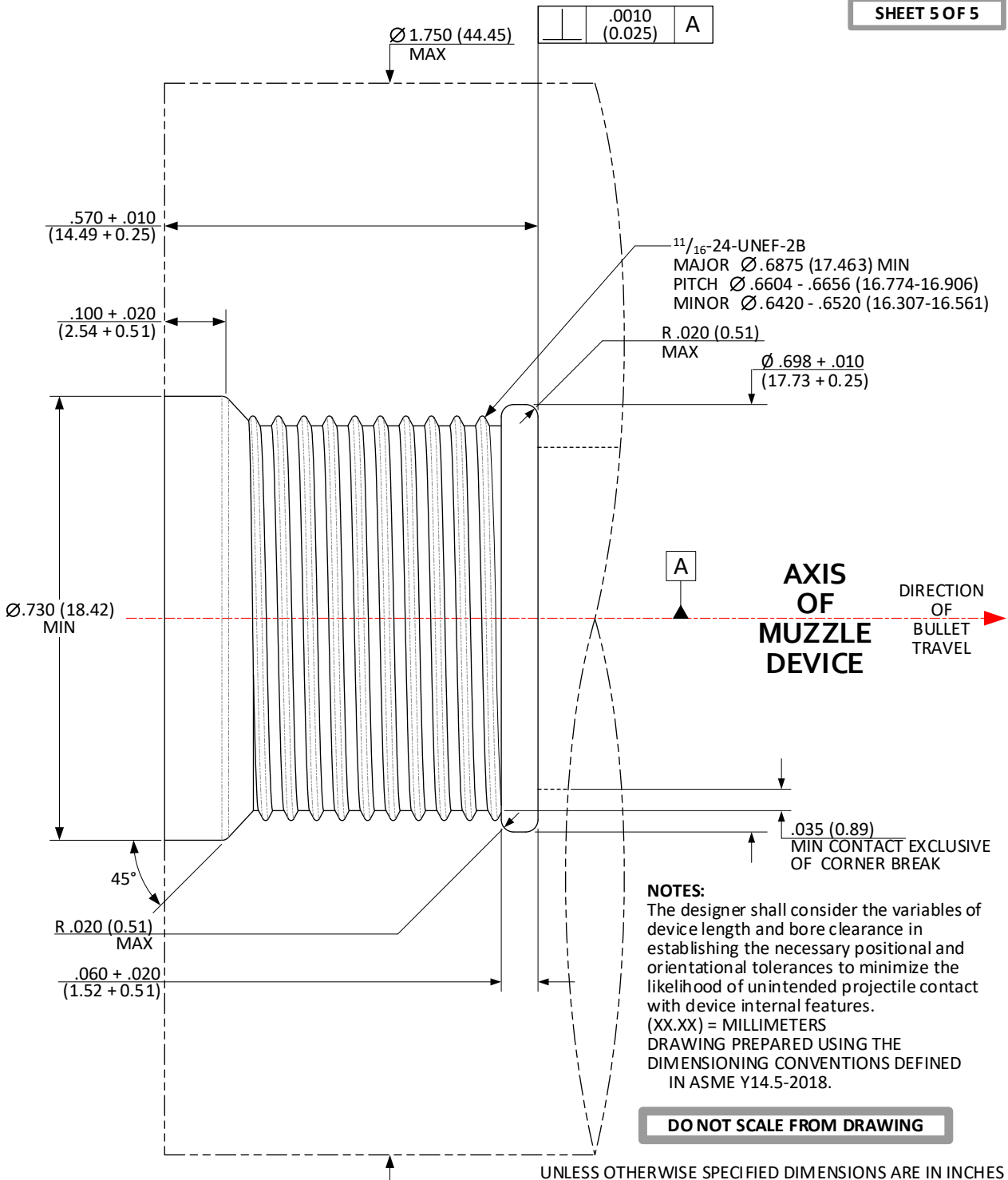
**CFR: .6875-24-UNEF-2B; >.305 (7.75) / ≤.450 (11.43) BORE –
SOCKET THREADS; SHOULDER INDEXING**

SHEET 4 OF 5



**CFR: .6875-24-UNEF-2B; >.305 (7.75) / ≤.450 (11.43) BORE –
SOCKET THREADS; MUZZLE INDEXING**

SHEET 5 OF 5



DO NOT SCALE FROM DRAWING

UNLESS OTHERWISE SPECIFIED DIMENSIONS ARE IN INCHES

.X	±.1 (3)	ANGLES	±0.5°
.XX	±.01 (0.3)	FILLET RADII	.005-.010 (0.13-0.25)
.XXX	±.005 (0.13)	BREAK EDGE	.005-.010 (0.13-0.25)
.XXXX	±.0005 (0.013)	SURFACE FINISH	▽ (▽)