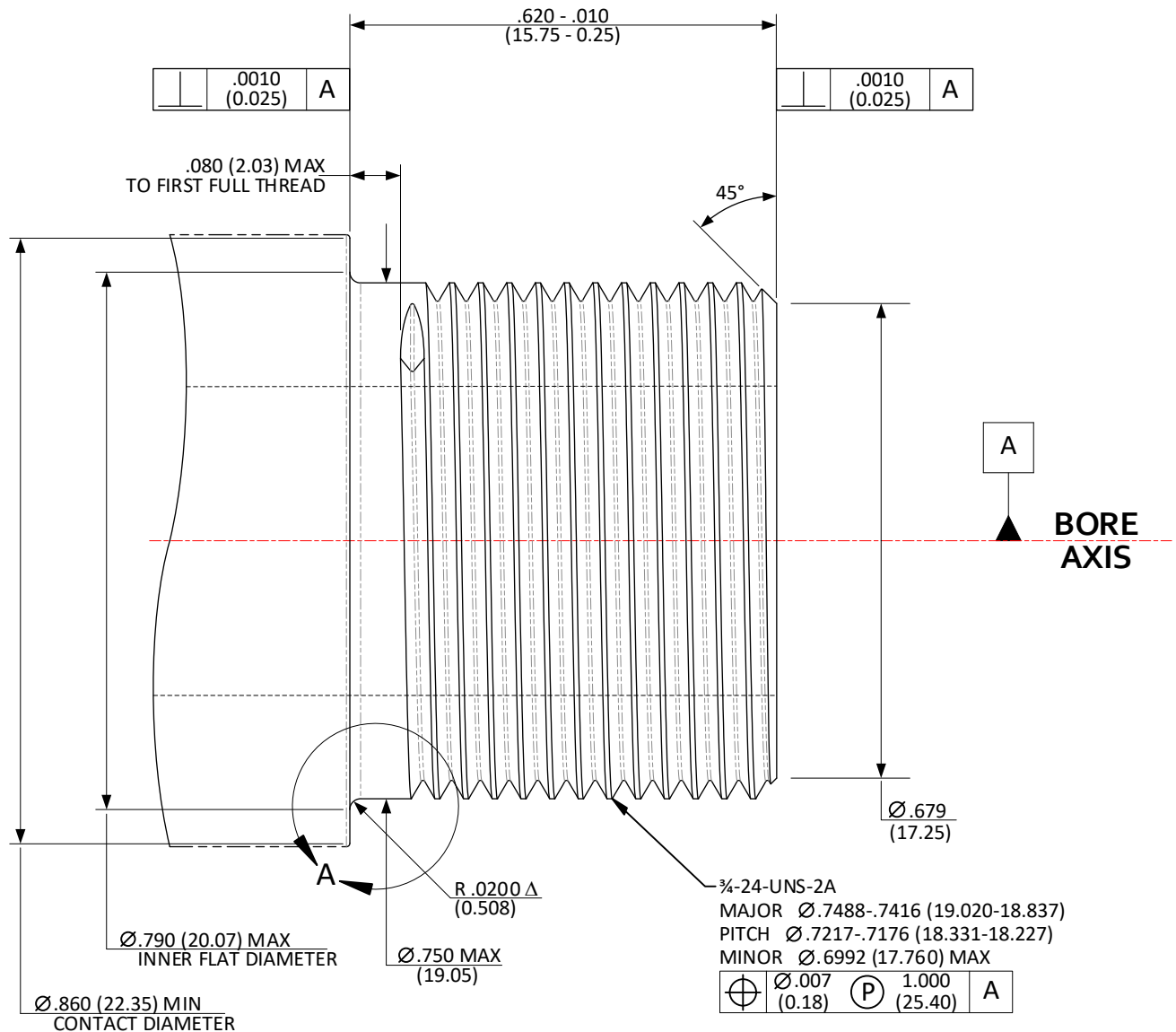


**CFR: .75-24-UNS-2A; >.305 (7.75) / ≤.450 (11.43) BORE – MUZZLE THREADS**

SHEET 1 OF 5



NOTE: IF THE MINIMUM SHOULDER CONTACT DIAMETER CANNOT BE ACHIEVED, MUZZLE INDEXING MUST BE USED.

DO NOT SCALE FROM DRAWING

**NOTES:**

DATUM "A" FEATURE IS DEFINED AS THE LAST 3.0000 INCHES (76.200) OF THE BORE AT THE MUZZLE END OF THE BARREL.

Δ = REFERENCE (XX.XX) = MILLIMETERS  
DRAWING PREPARED USING THE DIMENSIONING CONVENTIONS DEFINED IN ASME Y14.5-2018.

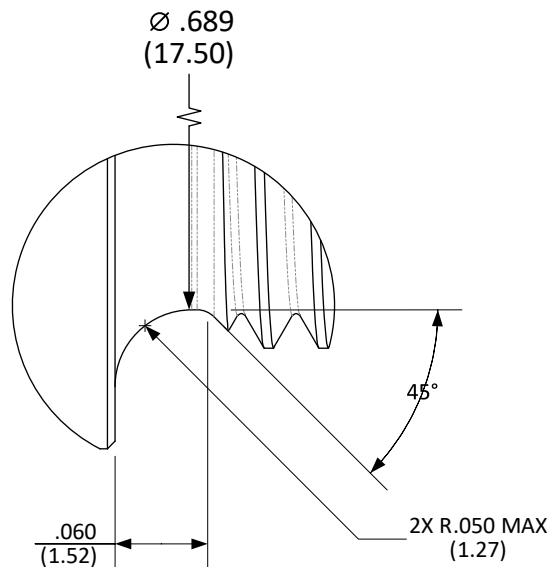
UNLESS OTHERWISE SPECIFIED DIMENSIONS ARE IN INCHES

.X ± .1 (3) ANGLES ± 0.5°  
.XX ± .01 (0.3) FILLET RADII .005-.010 (0.13-0.25)  
.XXX ± .005 (0.13) BREAK EDGE .005-.010 (0.13-0.25)  
.XXXX ± .0005 (0.013) SURFACE FINISH 12/ (1/12)

**CFR: .75-24-UNS-2A; >.305 (7.75) / ≤.450 (11.43) BORE –  
MUZZLE THREAD RELIEF**

SHEET 2 OF 5

**DETAIL A  
OPTIONAL THREAD RELIEF**



**DO NOT SCALE FROM DRAWING**

**NOTES:**

(XX.XX) = MILLIMETERS

DRAWING PREPARED USING THE DIMENSIONING CONVENTIONS DEFINED  
IN ASME Y14.5-2018.

UNLESS OTHERWISE SPECIFIED DIMENSIONS ARE IN INCHES

.X	±.1 (3)	ANGLES	±0.5°
.XX	±.01 (0.3)	FILLET RADII	.005-.010 (0.13-0.25)
.XXX	±.005 (0.13)	BREAK EDGE	.005-.010 (0.13-0.25)
.XXXX	±.0005 (0.013)	SURFACE FINISH	▽ (▽)

**CFR: .75-24-UNS-2A; >.305 (7.75) / ≤.450 (11.43) BORE –  
EXCLUSION ZONE**

**SHEET 3 OF 5**

AS REFERENCE, THE SHADED AREA REPRESENTS A ZONE  
INTENDED TO BE RESERVED FOR DEVICES ATTACHED TO  
THESE THREADS. NO PART OF THE FIREARM SHOULD  
INTRUDE INTO THIS AREA AT ANY TIME IN THE FIRING CYCLE.

**BORE  
AXIS**

Ø 2.25  
(57.2)

**DO NOT SCALE FROM DRAWING**

UNLESS OTHERWISE SPECIFIED  
DIMENSIONS ARE IN INCHES

.X ±.1 (3)  
.XX ±.01 (0.3)  
.XXX ±.005 (0.13)  
.XXXX ±.0005 (0.013)  
ANGLES ±0.5°  
FILLET RADII .005-.010 (0.13-0.25)  
BREAK EDGE .005-.010 (0.13-0.25)  
SURFACE FINISH  $\sqrt{\text{ }}$  ( $\sqrt{1.75}$ )

**NOTES:**

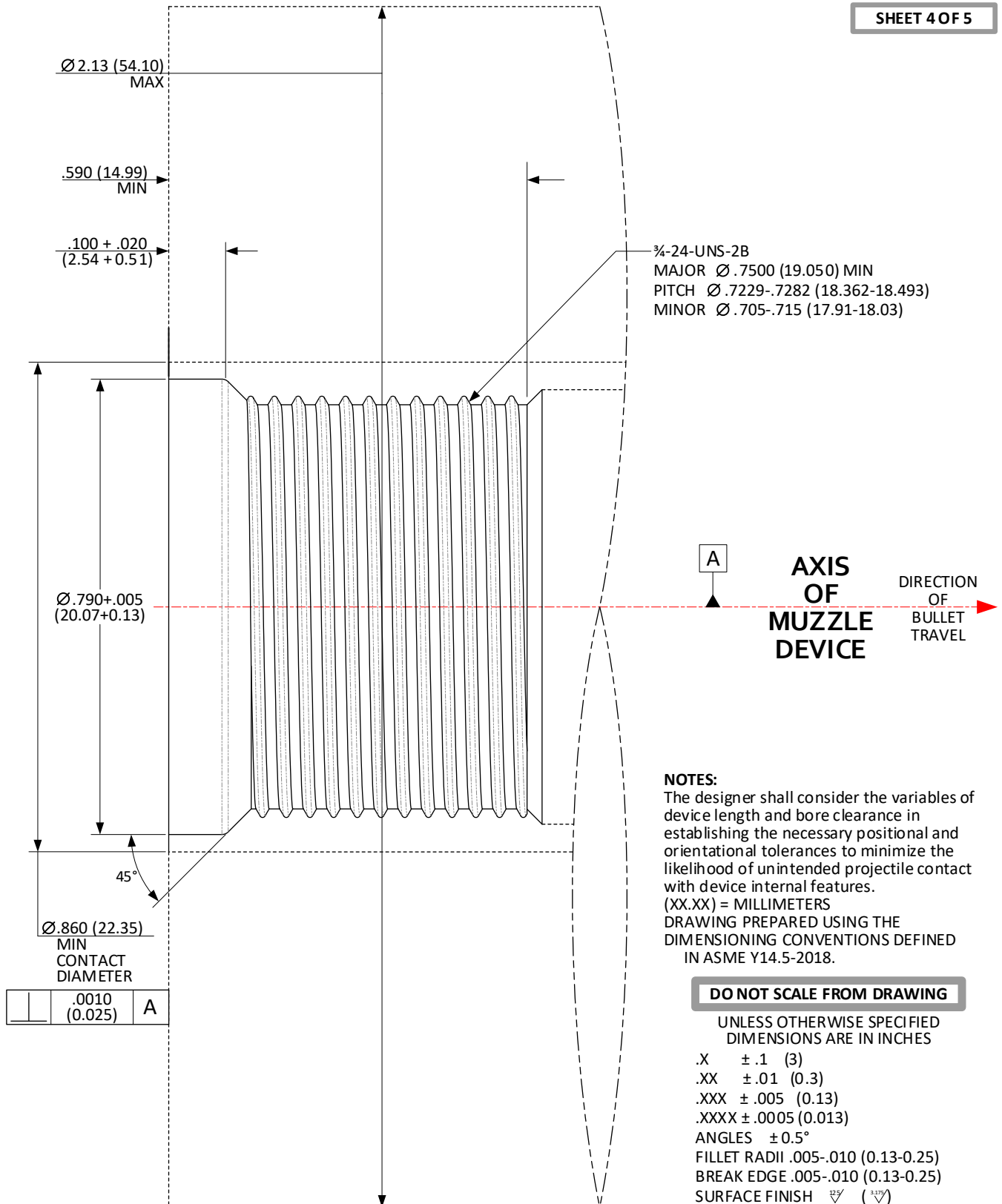
(XX.XX) = MILLIMETERS

DRAWING PREPARED USING THE DIMENSIONING  
CONVENTIONS DEFINED IN ASME Y14.5-2018.

.020 (0.50)

**CFR: .75-24-UNS-2B; >.305 (7.75) / ≤.450 (11.43) BORE –  
SOCKET THREADS; SHOULDER INDEXING**

SHEET 4 OF 5



**CFR: .75-24-UNS-2B; >.305 (7.75) / ≤.450 (11.43) BORE –  
SOCKET THREADS; MUZZLE INDEXING**

SHEET 5 OF 5

